

EAST HENDRED *Bulletin*

Well Deserved Award for Service to Snells Hall



A couple of lads in the village were overheard recently: "Who's that man?" said one.

"That's Mr Taylor - he owns Snells Hall!" came the reply.

This answer was not strictly accurate, but given the many years of dedicated service that Ken Taylor has given to the hall, it is easy to see how one might think it was his own!

In recognition of his ongoing service to the hall and the community (ably aided by his wife Ann) Ken and Ann were invited to the Guildhall, Abingdon on 15th October for the Chairman's Community Awards Lunch, whose theme was "Volunteering for the Vale". The picture shows Alison Thomson, Chairman of the Vale of White Horse District Council, presenting Ken with his award.

Well done Ken, you are a sincerely appreciated pillar of our community!

Don't forget to visit the
village website:
www.hendred.org

Community First Responders Fundraising Success



A very successful concert by the Wantage Male Voice Choir was held in Snells Hall on Saturday 22nd October (see photograph). Their range of songs not only in English but in Welsh and Zulu was fabulous. The audience was spellbound. The choir generously donated their time to help raise money towards the purchase of our first defibrillator and kit for which we thank them. Thanks to the lead taken by Jill Broadley in organising this event; the evening raised over £500.00.

We have also been very fortunate in receiving a donation of £400.00 from the W.I enabling us to reach our target of £2,000 with money left over, which is fantastic. Although we need to keep some money to help with maintenance of the equipment we are planning to use some of the remainder to organise subsidised first aid courses for anyone in the village who would like to learn basic first aid. Not to rest on our laurels we hope to be able to raise enough money to enable us to have two full kits available for use eventually.

Thank you to everyone in the village and beyond for their support and generosity which has enabled us to get this far in such a short space of time.

Sue Roberts and Pam Lundyates



SPRINGBUILD CONSTRUCTION

- EXTENSIONS
- RENOVATIONS
- LOFT AND GARAGE CONVERSIONS
- LANDSCAPING
- ALL ASPECTS OF BUILDING WORK UNDERTAKEN

FOR A FREE QUOTE CONTACT SIMON RITSON ON 01235 510298

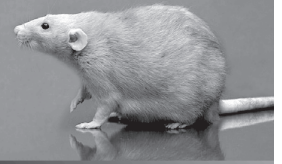
Mobile: 07795 104027

Email: simon@springbuildconstruction.com

Website: www.springbuildconstruction.com

Specialists in all aspects of Pest Control

- Agricultural
- Industrial
- Domestic



For a **Pest Free Environment** call now on

01367 820333

Fax: 01367 821115

Email: info@valegame.co.uk

www.valegame.co.uk

Established
1991



hamper.com

CLEARWATER HAMPERS

Food and wine gifts sent around the world for christmas, birthdays, anniversaries, thank you's and all occasions.

Choose from our extensive range or create your own hamper.

**Order online
www.hamper.com
or call 01235 833732.**



The thoughtful gift company

Denise's Beauty Treatments

Epil-Pro

A pain free, quicker alternative to Electrolysis

Full range of Beauty Treatments available

Evening appointments & Gift Vouchers

Phone: 01235 767670

Courtenay Computer Services

Repairs, Upgrades, Email, Internet, Broadband; new hardware or software including AntiVirus, Firewall and Spyware; Networking, both Ethernet and wireless.

Web Site design; One-to-one tuition: Internet, Email, Photo-enhancing, Word Processing, Spreadsheet, or simply a basic introduction to your computer... any issue that prevents you getting the best from your PC.

I offer a computer service **IN YOUR HOME or BUSINESS** at a time to suit you.

Martin Underwood, MBCS

01235 847104 / 07748 632563

Hazel Lee Painter & Decorator

Interior & Exterior

Fully Insured

07866 509683

hazel.lee78@hotmail.co.uk

from the chair

We are nearly at the end of another year (they go so fast these days!) We are all aware of the economic downturn in the country and financial pressures on all organisations. The Parish Council has recently reviewed its budget for 2012/13 to set the precept at the December meeting. We have taken into account the financial issues mentioned above and identified key areas where the Council needs to spend money locally to maintain village facilities. The plan is to restrict any

increase to the current level of inflation, acknowledging that the costs of many services which the Council needs to pay for have increased in the last year.

Next year we will have the Diamond Jubilee celebrations for the Queen's accession to the throne 60 years ago. I know plans are already underway to celebrate this event in the village and the Parish Council is planning to give each child resident in the village a celebration mug. The last time this was done was for the Golden Jubilee in 2001.

Planning still remains a key issue with the Parish Council,

particularly as the Vale District Council has published a Consultation Document on relaxing some of the planning guidance that affects this village. A brief account of the planned change appears elsewhere in this Bulletin. We held a Public Meeting in Snells Hall on Nov. 16th to discuss the proposed changes. The plan was to seek village views so that the Council could take them into account in providing its response to the District Council in late November. One of the key relaxations is to allow building outside but abutting the built-up area of the village. This could bring benefits to

the village (particularly for sites for affordable housing) but could also encourage larger developments. The meeting felt that road access was a key factor for any development site, as well as a need to ensure that any future development was sustainable, taking into account village facilities. At the time of writing the Council's response has not been finalised but will be made available on the village web-site in due course.

With very best wishes for Christmas and the New Year

John Sharp

Parish Council Precept

Every autumn the Parish Council reviews its finances and decides on the level of precept required for the coming year. Recently our Finance Group has been looking at our requirements for 2012/13. Our expenditure is divided into several categories with the largest spend on village maintenance (lengthman, grass cutting, playgrounds etc), Council staff (Clerk, Finance Officer), insurance and audit, *Bulletin*, courtesy lighting etc. Our income includes grants for grass cutting, *Bulletin* adverts and the precept. Last year the precept was increased to £25,000 to allow for the joining of West Rowstock to our parish. A decision on the precept for the coming year will be taken at the Council meeting in December. The Parish Council keeps spending down by careful control and any efforts that residents can make to help keep costs down (for example, by encouraging children to treat playgrounds properly) are appreciated.

Changes to Bus Services

New contracts for the subsidised bus services serving the parish have been let and new timetables will start on 11th December.

- The 32 (Grove/Wantage-East Hendred-Rowstock-Didcot-Abingdon, Monday-Saturday) bus service will no longer be subsidised, but operated commercially by Thames Travel with a similar timetable to the present one. The current routing through East Hendred is maintained, but Ardington will not be served.
- The 32A (Grove/Wantage-East Hendred-Rowstock-Didcot, Sunday) will be operated by Thames Travel in place of RH Transport and, as suggested by the Parish Council, extended to Oxford as part of service X32. It will no longer serve Abingdon.
- The X32 (Oxford-Didcot-Rowstock-Chilton) and 34 (Oxford-Abingdon-Rowstock-Wantage, peak times only) are commercial services and will have only minor timetable changes.

Do you know someone that needs care?

Our East Hendred team offers specialist Live-in Care, enabling those who wish to remain within the comfort of their own home the opportunity to do so.

Giving one-to-one support our Live-in Carers are able to balance independent living with bespoke care needs by assisting with:

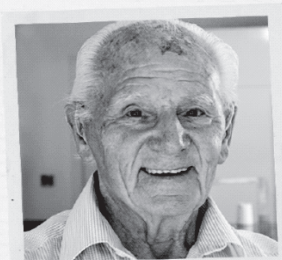
- personal care
- companionship
- housekeeping

Our award-winning service is rated Excellent by the Care Quality Commission.

Find out how we can help you, please call 0808 180 1017 or visit www.helpinghands.co.uk



Helping Hands
Established since 1989



Vale District Council Consultation on “Draft Interim Housing Supply Policy”

The Vale Council has recently published a consultation document on the proposed relaxations to the current planning policy for villages in the Vale District. The problem is that the Government requires that councils maintain a supply of deliverable housing sites sufficient to meet house building targets for the next five years. There has been slow progress on large Vale housing sites already allocated, caused primarily by the recession, so the Council no longer has a five year housing land supply, despite their longer term housing land reserves. The council has decided to respond proactively by preparing an Interim Housing Supply Policy (IHSP) to boost the housing supply in the short term to catch up with our existing housing delivery target. It will operate until the Core Strategy is adopted (anticipated 2013), or until 1,000 homes are permitted under the IHSP approach (whichever comes first).

It is proposed that the IHSP will relax certain Vale Local Plan 2011 policies on qualifying sites to encourage additional housing growth within or directly adjoining Vale towns and villages. The policy outlines a set of guiding principles and tests for potential new sites, to ensure they are both sustainable and deliverable, and that the level of growth proposed is proportionate for the location.

The Vale Council is inviting the public and other interested parties to comment on the proposed interim policy. The Vale Council is also inviting land owners and developers wishing to promote land for housing development to consider whether their site and development intentions meet IHSP requirements, and if so to submit the site for a screening opinion for suitability to proceed. The consultation period ends on Nov.25th.

East Hendred is one of 21 villages (larger villages with a range of services) where at present new housing development is limited to sites of up to 0.5Ha and not more than 15 dwellings permitted per site. In addition development is limited to sites within the built-up area which can be developed in a way which safeguards their character. The proposal is to relax the limit on the number of dwellings on one site for larger villages, such as East Hendred. In addition the proposal is also to relax the limit on new housing being in the built-up area of a village allowing development on sites outside but abutting the defined built up area of larger villages.

These changes could have significant effects on this village. The Parish Council arranged a Public Meeting to present these planned changes to the village and obtain reactions so that the Council can respond on behalf of the village by the deadline of Nov.25th. The main discussions were centred around the proposed increase on the number of houses on any one site and on the relaxation of building only in the built-up area of the village. On the former, the meeting's view was that developments of larger than 15 houses would be unlikely given the several important restraints that apply, such as vehicle access. The relaxation to build outside the built-up area was seen as both a potential benefit and also as having some possible negative effects on village life. The availability of sites on the edge of the built-up area for mixed housing (combination of affordable and market housing) could lead to more affordable houses being built as other sites are proving difficult to find. On the other hand development of large areas close to the village core might result in unwanted developments. One saving grace is that under current planning guidelines (not to be relaxed) 40% of housing on any new site has to be affordable. Unfortunately the Vale Council's assessment of village housing needs has not taken account of the recent incorporation of West Rowstock into this parish. They have been made aware of this omission. The Parish Council The council is now in the process of finalising its response, taking account of the views expressed at the meeting and it will be placed on the village web site in due course.

Extend fashion to your fingertips

Minx

Minx Nail Armour - the latest celebrity fashion accessory with over 140 designs. £25



SAY HELLO TO Shellac

Shellac Manicure Zero dry time, wears like a gel, and removed in minutes. £25

Call Amanda on 07825 800006 to book an appointment

www.bodyfitbedford.co.uk bodyfit@bodyflight.co.uk

ARBOCARE
TREE SURGERY & LANDSCAPING



Fully Experienced & Qualified Arborist
Established for 20 years
Tree Surgery
Fencing & Turfing
Grass & Hedge Cutting
Landscaping & Garden Design

Call for more information and a FREE quote:

freephone 08081555815
mobile 07778811136

APPROVED CONTRACTOR TO THE NATIONAL TRUST

Michael Harvey CERT. ARB. RFS

**24 HOUR
EMERGENCY SERVICE**

www.arbocare.co.uk

BED & BREAKFAST



MONKS COURT
EAST HENDRED

A Comfortable Family House
on the edge of the village

07710 274653

Message From District Councillor Mike Murray

The emerging Government National Planning Policy Framework (NPPF), the subject of much debate in the Telegraph and elsewhere, not only in its draft form allows for "presumption in favour of sustainable development" but also requires councils to plan for 15 years of housing supply, and demonstrate 5 years worth of sites for the period from 2006. If councils can't do this then the NPPF effectively requires councils to permit housing applications, even where they are not in accordance with normal plan policy (this is where the Telegraph talks about concreting over our green and pleasant land etc). For us in the Vale the housing need numbers have been established as 578 new homes every year from 2006 to 2029.

The Vale has a problem, in that its new Local Plan (LDF) is behind schedule, and in addition large allocated sites such as Grove Airfield have not come forward for development for reasons such as site assembly difficulty etc. As such we are likely to struggle to demonstrate our housing supply (we are 800 short for the period to 2011, and 1200 short for the period 2011 to 2016), and unless we take action are vulnerable to uncontrolled "planning by appeal". In order to do something about this, the Vale is consulting on a temporary and interim relaxation of some policies, to allow some housing sites to come forward, to deliver new housing in a relatively short timescale. This relaxation will be a strictly managed process, to enable another 1,000 houses to be built by 2014, or until our new Local Plan is in place, whichever is the sooner.

There are various tests, including making sure that villages only get more housing proportionate to their existing size, to match their expected future demand (caused by households becoming smaller, and so more houses needed for the same population etc), that there are no better sites already identified within the village boundary, that the proposed site is otherwise suitable for development, or that the proposal has Parish Council support. Also redundant employment sites adjoining housing may be considered. This policy will also allow larger sites to come forward, which will improve the chances of affordable housing being delivered in villages.

Whether one agrees with the methodology behind the calculations of housing need and supply (imposed by the last Government) or not, the Vale needs to take action now to prevent a planning free-for-all next year, and this seems a sensible proposal bearing in mind the lack of obvious major sites. The best place to look is on the Vale website and search SHLAA (Strategic Housing Land Availability Assessment) - in particular Appendices 6 (Village sites) and 7 (villages able to accommodate more than 200 dwellings). They make particularly relevant reading for us - N.B. where there are no SHLAA identified sites in the village suitable and available, then there may be potential for sites bordering the village to come forward instead..... with all that that entails. This is a hot and contentious topic, where local government is being driven to deliver houses by central government planning law.

Note: Appendix 6 shows five sites in East Hendred which are deemed unlikely to be available due to their current use. Appendix 7 identifies East Hendred as unsuitable for accommodating 200 homes due mainly to transport issues.



Contented Childcare is a high quality nanny agency with the personal touch

WHAT WE PROVIDE:

- Full time/part time nannies
- Mother's help
- Maternity nurses/night nannies
- Weekend/special occasion nannies
- Temporary childcare
- Babysitters

01235 850 436 | 07890 334 460
info@contentedchildcare.co.uk
www.contentedchildcare.co.uk



CHARLTON PARK GARDEN CENTRE AND FLORIST



For all your local, national and international flower deliveries
www.charltonflowers.co.uk

Visit our large pet department and shrub area

Free events and workshops for children, gardeners and nature lovers throughout the year



Your friendly, local and independent garden centre

CHARLTON ROAD, WANTAGE
01235 772700
www.charltonpark.net



treeworks^{csb}

Ian Trotter – arborist

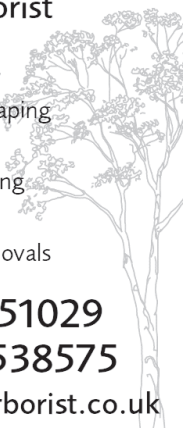
NC Arb, ISA Cert Arb

- tree crown reducing/
thinning/lifting/reshaping
- pollarding
- tree felling/dismantling
- fruit tree pruning
- hedge trimming/removals

t: 01235 751029

m: 07771 538575

www.iantrotterarborist.co.uk



DRC
CONSTRUCTION (WANTAGE) LTD
A FULL BUILDING SERVICE
Construction, Extension, Alterations,
Renovation, Conversion, Installation
For a free quotation please call David or
Claire
07732516364 01235767078
NO JOB TOO SMALL
WWW.DRCCONSTRUCTION.CO.UK



Hendreds Pre-School

Is your toddler almost three?

The Hendreds Pre-School meets in purpose-built premises at Snells Hall, East Hendred and provides a bright, stimulating and safe environment for children from three.

Contact us for an informal chat or to reserve your place.

We are open weekday mornings during term time and offer an optional lunch club.

We go on village walks and outings and have fun with paint, puddle jumping and playdoh!

To arrange a visit call

Fiona Brown (Supervisor) on 01235 831555 or e-mail info@hendredspreschool.org.uk

To discuss places and grant funding call Shalu Patel (Membership Secretary) 07852 959538.

www.hendredspreschool.org.uk

THE INDEPENDENT ADVICE



FREE HELP & ADVICE

including Benefits and Debt

AT THE

Independent Advice

Centre 16 Market Place,

Wantage

(behind Barclays Bank)

Advice Line: 01235 765348

Email: help@advicecentreonline.com

Reg charity 270992



All year round
LANDSCAPING



GARDEN CONSTRUCTION & MAINTENANCE



www.all-year-round-landscaping.co.uk



*Garden Makeovers *Driveways *Patios *Groundwork*Fencing *Garden Clearance

Fully Insured

Tel: 01235 810242 / 07966 411378

E-mail ben@all-year-round-landscaping.co.uk

Parish Councillor Profile

Stephen Webb - Parish Councillor and parish transport representative

What is your occupation?

Research scientist at Rutherford Appleton Laboratory (RAL), within the new Research Complex at Harwell. I design and build new fluorescence microscopes and use them to study various molecules involved in cancers.

What are your favourite hobbies?

We spend much of our time renovating our cottage. I also perform on stage (I was in Abingdon Operatic Society's 'Hello, Dolly!' at the end of October) and enjoy walking, cooking and photography.

When and why did I move to the village?

I moved to the village two years ago, having relocated from RAL's sister laboratory at Daresbury in Cheshire. We were looking for an old house and one of the few affordable ones that were available, albeit in need of extensive repair and conservation, happened to be very close to RAL.

What is your favourite place in the parish?

Chapel Square.

If you had unlimited funds to spend on a project for the village, what would you like to do and why?

Provide all-weather, direct cycle routes towards Didcot, Milton Park and Wantage, separated from the main roads.

What is your favourite piece of music?

I have very eclectic tastes, ranging from Romanian gypsy brass bands through Handel and Buxtehude to showtunes. At this moment, Hello, Dolly! is going through my head all the time so I suppose that is my favourite!

What is your favourite book?

For non-fiction, I always like to dip into 'McGee on Food and Cooking'. For fiction, 'Alice in Wonderland' never ceases to delight 30 years after first reading it.

What is your favourite film?

The Full Monty.

What is your greatest fear?

Drowning.

What is your idea of perfect happiness?

Being outside in warm sunshine with good company and laughter, food and a glass of something.


What would your motto be?

Treat everyone as your equal.

How would you like to be remembered?

Just to be remembered would be enough!



 <p>LOGS FOR ALL SEASONED FIREWOOD - DELIVERED Tel: 0845 269 0306 www.logsforall.co.uk</p>	<p>Seasoned 100% Beech Firewood from FSC Certified Sustainable Local Forests</p> <p>Now taking orders</p> <p>FREE Local 'no-mess' Delivery FREE bag of kindling with first order</p> <p>Relax, secure in the knowledge that you're well prepared for the long, cold winter months with a well-stocked log pile!</p> <p>2 Sizes Available: 6-9 inches (15-23 cm) and 12-14 inches (30-25 cm)</p>

Community Policing Update

New Non-Emergency Telephone Number

Thames Valley Police is due to go live with 101, the new national single non-emergency number, on 14th November 2011, will replace the 0845 8 505 505 number. Both numbers will run side by side until the end of March, but if demand for the 0845 8 505 505 number drops it may be discontinued earlier. Calls to 101 (from both landlines and mobile networks) cost 15 pence per call, no matter what time of day the call is made, or the duration of the call. Everyone calling the police for non-emergency matters will now know exactly how much a call will cost them, and can be assured of equal access whether they are on a pay-as-you-go mobile or a home landline. The routing will be based on the same system as 999 calls. If a caller is using a landline the routing will be based on the caller's postcode and the call will be directed to the same area's force. If a caller is using a mobile, the call will route using the mast that the phone is transmitting from.

Neighbourhood Update

The Wantage East Neighbourhood team would like to welcome PC Sarah Merritt as our new Neighbourhood Specialist Officer (NSO). Sarah is replacing PC Steve Lynch who is joining CID in Newbury. We would like to wish Steve all the very best in his new job. The Wantage East and West Neighbourhood officers have been continuing with Operation Migrate to deter the practice of hare coursing & rural crime. Three people were arrested for various offences following a report of illegal lamping on land near Ardington. PCSO Larry Gardner was first on scene to a cyclist who fell off his bike on Milton Park and administered first aid.

PCSO Denise Clements has been working closely with Environmental Officers from VOWH DC and skip companies, to create awareness and prevention advice to persons who hire skips of "theft by finding". A crime occurs when someone removes items of scrap metal from skips, strips the valuable scrap metal then fly-tips what is not needed. PCSO's Tim Deane and Gary Kirby attended a Business Crime Prevention Event in Shrivenham.

Police Community Support Officer C9815 Tim Deane

East and West Hendred WI

In October our members went on a private guided tour of the Ashmolean Museum in Oxford. The museum was revamped in 2009 and is Britain's oldest museum which houses the world's most diverse cultures. Everyone agreed it was a fascinating and remarkable morning.

At our October meeting Alex Stanbrook talked on a variety of topics wearing many colourful hats and kept us all entertained in her inimitable humorous way.

In November John Pumphrey presented a talk titled 'Is It Art?'. John trained at Kingston School of Art and looked at the need which drives artists to be confrontational in their work.

Members will be preparing lunches for the many visitors to the East Hendred Christmas Market in December. Mulled wine and Christmas puddings will be on the menu and there will be a raffle of superb hampers.

Hendred House is the setting for our December meeting. There will be carols, mulled wine and mince pies. Jennifer Sarton, who has connections with Sulgrave Manor, will be the guest speaker. Jennifer will take on the role of 'Martha' the cook and housekeeper to the Lady of the Manor and outline how traditional Christmas foods were prepared. This will be a wonderful start to the festive season.

Our meetings are usually held on the third Thursday of the month at Snells Hall Community Centre, East Hendred at 7.45 pm and guests will be warmly welcomed.

Website is www.hendredswi.com and your contact is Lesley.Hendred@gmail.com



D Mayes
Painting
& Decorating

Interior & Exterior
Domestic & Commercial
Professional Service
Free Estimates
References Available

Tel: 01235 511619
Mob: 07979 862159

Planning for
Appropriate
Development

town planning consultants

monks court
newbury road
east hendred
OX12 8LG



contact. roger turnbull

tel. 01235 862 554

mob. 07860 338278

East Hendred Community Centre

Kim and Lukasz our new Wardens moved into Snells House in the middle of October and are settling in well and are diligently carrying out the various duties associated with this post. As predicted in the last Bulletin they are also proving to be an asset to the wider community with their endeavours to provide African Drumming and Percussion Workshops and the intention to make a short film about village life here. Please contact them at Snells House if you want to know more.

We have to report that the toilet renovations are being delayed somewhat until we have received the decision of our major grantor (WREN) and this will not be known until March next year. Perhaps this is a blessing in disguise in that we will avoid having building operations in mid-winter. Nevertheless, the work will go ahead as soon as we have accumulated the necessary funding.

Regular users will know that because of increasing costs the committee has approved a general increase of 5% in hall fees from January 1st 2012. Recent changes in law that govern copyright music in community buildings means that from January 1st we also have to find more than £150 each year to enable live and recorded music to be played any time at the premises. To help recover some of this payment without having to log which group has played music it has been decided to ask every regular user group to pay an extra 50p each month and other events, such as dances, discos, weddings etc. a suitable proportion of their fee. This will entitle everyone to play on regardless.

The hall still relies quite heavily on fund raising to help with capital items such as repairs, which are legion on a building that is generally over 150 years old. The Christmas Bazaar falls into this category and in addition we are extremely grateful to Charles Pappenheim and his family for organising the very successful Beerfest in the past three years.

Fortunately the Bar has been operating more frequently in 2011 and this helps with extra income. We want in this case to highlight the excellent work carried out by David Harper as the Bar Manager.

It is generally recognised both locally and throughout the county that Snells Hall is a very well equipped and attractive venue for all kinds of functions at very competitive rates. An increase in the number of bookings by both village and other customers is due to use of our e-mail address (events@hendred.org) and the on-line Snells Hall calendar which enables potential customers to check the availability of their proposed dates.

An innovation that will interest certain hirers, such as wedding receptions, parties, or other events that finish at midnight, is the option to pay for the hall to be cleaned after their event rather than having to do it themselves. The Wardens would be happy to offer a paid service for a fee of up to £40. However, it must be made clear that this does not include washing up, which should be done by the caterers involved and care will be needed to avoid hirers leaving the hall in an unnecessary dirty state. The cleaning service will be included in the conditions of hire for a trial period.

Milletts
Farm Centre



Milletts Farm Centre gives visitors a taste of the countryside at its natural best. Over 50 years we've grown from a traditional farm, to now include:

- Farm Shop
- Garden Centre
- Restaurants
- 'Pick Your Own' Fields
- Phoebe Wood
- Seasonal Events
- Farm Zoo
- Childrens Play Area

Come and visit
Milletts - a great day
out for all the family

FREE PARKING
for 800 cars
Open 9am-5.30pm
7 days a week

Milletts Farm Centre
Kingston Road
Frilford
Near Abingdon
OX13 5HB

www.millettsfarmcentre.com

Hendred Twinning Society

The exchange in 2012 will be in the Hendreds and has been arranged for the week-end of July 7th to 9th. We are expecting around 25 people from Sarceaux, our twin village in Normandy, staying with us here. New members are always welcome and a full programme of events is being planned. This includes a full day's outing by coach with our visitors on the Sunday from the village to a major tourist attraction (two years ago it was Hampton Court).

The Hendreds Twinning Group, together with Springline Players, worked together to provide refreshments for the Ardington Boneshaker event in September. The group organised cooking and serving delicious bacon butties, on three catering sized BBQs, feeding the hungry competitors and their families. The profits will go towards the Group's funds, enabling us to entertain our visitors in style next year.

A complete taste of the countryside

Peter G Cousins

A.A.DIPL., A.R.I.B.A.

Chartered Architect

Practice established in 1957

All classes of architectural work
large or small undertaken

Planning consultation service

Environmental audits prepared

Advice on energy conservation

Tel: 01235 833236

Fax: 01235 835015

YOUR LOCAL TOOL HIRE & GARDEN MACHINERY CENTRE & AGRICULTURAL DEALERS



Garden & Agricultural Machinery Quad Bikes

Dickies Outdoor Clothing, Safety, Work and
Leisure Wear - Tayberry Ladies Fashion
Wellies - Toy Tractors/Farm Machinery
Tools & Ironmongery, Safety Signs, Vehicle
Maintenance Sundries, Rodent Prevention - and
much more



Please call and visit our shop at:- **CHALLOW HOUSE FARM, MAIN
STREET, EAST CHALLOW**

TEL: 01235 763103 www.ljcannings.co.uk

A helping hand to shape your land

GLOVERS PLUMBING

PLUMBING &
CERAMIC TILING
BATHROOM
CONVERSIONS



Tel: 01235 768613
Daytime Mobile:
07850 687903



Snells Hall, East Hendred

For hire for: Parties, Shows,
Meetings – one-off or regular,
Large & Small Rooms, Kitchen,
Licensed bar, Garden available
WiFi, PA System, T-Loop

Bookings and Enquiries:

01235 833359

snellshall@hendred.org

Voice and data installation specialists

- New and Used Telephone Systems
- Telephone, Headsets and Accessories
- Extension Sockets
- Structured Wiring
- Fibre
- P.A. Systems
- Voicemail



Oxford and Surrounding Areas

01235 833422

www.djmtele.com

Email sales@djmtele.com

Panasonic HellaermannTyton KRONA BT

Unit 7 Old Estate Yard East Hendred Wantage Oxon OX12 8BE

Domestic & Insurance work specialists

Traditional plastering
with a modern, professional service!

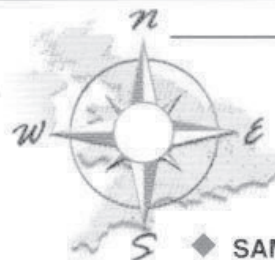


Over 20 yrs of clean, quality finishing!

Visit our website for more info & our extensive
list of services

www.southernplastering.co.uk

01235-814413 07956-586778



SP
COURIER SERVICES

- ◆ SAME DAY UK Delivery/Collection
- ◆ Furniture and Appliances moved
- ◆ EBay Collection & Delivery
- ◆ House Moving Assistance

Tel: (01235) 524589 Mobile: 07721 679487

PTO

Rallying Round for a Good Cause

The Rally Office sign on the post opposite the Roman Catholic Church directs deliveries to the Endurance Rally Association, who have occupied the Old School for some years now. It is here that a small team organises classic car events all around the globe. The Peking to Paris, celebrating the original 1907 epic that became the world's first ever car rally and proved that frontiers would soon become meaningless in the eyes of the drivers, is their main event, but there is also a vintage-cars only rally from London to Edinburgh, which attracts 100 pre-war cars from far and wide, a rally across America is on the planning board, and, in January, perhaps their most ambitious event yet.

Chairman Philip Young is organising a drive from the Houses of Parliament on January 1st, to reach Cape Town on January 29th - that is 10,000 miles down the full length of Africa, in 27 driving days.

Charities will benefit and Philip has raised nearly two million pounds for various charities as a result of his rally exploits - the London to Cape Town World Cup Rally is raising funds for Water Aid, and a small schools charity that sponsors teachers to visit remote village schools in Africa on secondment, Africa Revival. The route is fascinating as it takes cars through Sudan, Kenya, Tanzania and Zambia before the world's oldest desert of Namibia.

You can follow the progress of this event on their website at www.endurorally.com and see the map of the cars which will go live after January 1st.

Guides Take on Miner Moths

The beautiful big conker tree at Snells Hall seems to have been infested by the horse chestnut leaf miner moth. This moth (about 6mm long) lays its eggs on the leaves. The larvae which develop from the eggs burrow into the leaves, creating brown dead patches that cause the leaves to die and fall, leaving the tree looking rather bare somewhat earlier in the year than normal. The larvae turn into pupae which hibernate in the fallen leaves and in time develop into moths, which lay their eggs on new leaves, and so the cycle starts again.

One way to reduce the damage is to remove the fallen leaves, so that although some moths are likely to arrive from nearby conker trees, the number attacking the tree is much reduced.

The 1st Upton and Blewbury Guides, who had a sleepover at the hall recently, fearlessly took the leaf miners on. A vast quantity of leaves was soon on its way to the dump, where the high temperature composting will do for the leaf miners.



Many thanks to the Guides for their efforts on behalf of our fine old tree!

If you would like to know more about Girlguiding UK, the UK's largest voluntary organisation for girls and young women, contact Anne Pappenheim (tel: 835014)

Mark Anthony Interiors
Design consultants & building project managers



Refurbishments,
Renovations, Extensions, Bathrooms,
Kitchens

TOTAL MANAGEMENT OF HOME IMPROVEMENTS

www.markanthonyinteriors.com

01235-814413 East Hagbourne 07956-586778

MILLBROOK SERVICES

PROFESSIONAL WINDOW
CLEANING

COMMERCIAL/DOMESTIC PROPERTIES
FULLY INSURED AND RELIABLE

TEL: 079700 51111
Email: millbrook1@fsmail.net
www.millbrookcleaning.co.uk

16 MORETON ROAD ASTON LIPTHORPE
NEAR DIDCOT OX11 9EP

News from the Churches

December starts with the village **Christmas Bazaar** on Saturday 3rd December in Snells Hall, raising money for the Community Centre (Snells Hall), St Augustine's and St Mary's churches. This is always a wonderfully traditional event, but this year as well as Father Christmas in his grotto, hand bell ringers, seasonal stalls and refreshments including mulled wine, tombola and Grand Draw with many prizes, bookstall, bric-a-brac and competitions, there was also an African drumming demonstration. The Bazaar is fast followed by The Springline Players' presentation of **Charles Dickens and A Christmas Carol** in aid of the East Hendred churches, on Thursday 8th and Friday 9th December at 7:30pm in St Augustine's church – a great opportunity to get into the Spirit of Christmas! In preparation for Christmas, there'll be a **Reconciliation Service** at St Mary's on Saturday 17th December at 11am. Then as Christmas approaches, there'll be a **Christingle** service for all ages on Thursday 22nd December at 4pm in St Augustine's church. Everyone is invited to this magical service with Christingle oranges and candles. On **Christmas Eve**, in St Mary's church there'll be readings and quiet reflection at 7:30pm followed by Mass at 8pm. **Christmas Day** falls this year on a Sunday, when the services will be as usual: **Mass at 9:30am at St Mary's** and **Holy Communion at 10:30am at St Augustine's**. Both churches will be decorated for the Christmas festival so do call in to see them.

The Penney Memorial Lectures continue in the New Year. The two very successful lectures in the autumn will be a hard act to follow, but Dr Peter Allan of the Rutherford Appleton Laboratory's Space Programme is sure to do it with his talk on **Saving Planet Earth** – a topic that affects all our lives. He will tell us how the study of space informs our knowledge of climate change and how the outcome is influencing future policy in this critical field. Refreshments will be available afterwards and there will be an opportunity to ask questions. 7.30pm on Friday 27th January 2012 at St Augustine's, tickets on the door (£7.00 for adults, children under 16 £3.50) in aid of the church.

St Augustine's **coffee mornings** take a break in December but continue in 2010 on the last Wednesday in the month – 25th January and 29th February – 10:30am in the church. Everyone is welcome for coffee and cake, and there's a small bring-and-buy table in aid of the church.

St Augustine's will soon be opening its new *mod con*. During the past few weeks Campbells have installed a toilet/kitchen area in the tower vestry, a facility which will be greatly appreciated by congregation, audiences and visitors alike. We are grateful to those who have helped finance the scheme.

We will also be preparing the perimeter wall to the right of the church gate. We apologise for any inconvenience caused by closure of the footpath, but everyone who walks along Church Street must have noticed that the old wall was bulging in an alarming manner.

Everyone is warmly invited to all church services and events, and you can always find more information about them on the notice boards outside both churches.

Walking Group

Despite the onset of autumn the Walking group is still proving very popular with between 10-14 participants (mostly ladies!) and some dogs turning out in all weathers. In fact it is universally agreed that the weather is nearly always sunny on a Wednesday. The walk starts at 9.30 promptly **every Wednesday** from Snells Hall. Now that we are all much fitter our walks now take about 2 hours and sometimes longer. We are also trying to include coffee somewhere in the middle or at the end to make it even more sociable!

We have had some wonderful walks in the late summer and autumn and have had several expeditions up to the Ridgeway, to Ardington and to Steventon. On 14th December sixteen of us are having a walk followed by Christmas lunch at the Ardington cafe

Please do not be put off by thinking that you can't walk the whole route or are too slow. This scheme has been set up to try to encourage those who don't normally walk very much to try and go a little further. New people seem to join every week. Please let me know if you would like to go on a shorter walk or ring me to find out which route we are taking.
Susie 833797



Walkers returning from Rowstock

NORDIC WALKING

GO Active from the VWHDC organised a Nordic Walking Taster Session on the Sports Field in early November and it proved so popular that 2 sessions were run with approximately 18 participants. This was followed by a 4 week course on Tuesdays from mid November to early December. There will be another 4 week course on Tuesdays in early January and there are currently a few places available. If you would like to book on to the course (£15 for 4 classes) please contact Anna Capel-Davies, GO Active Coordinator, 01235 540377. anna.capeldavies@southandvale.gov.uk.

On completion of the course the participants receive a certificate of competence!

Green Column

Hendreds Environment Group (HEG) manages the small woodland around the board walk, near Snells Hall. In the main this has involved keeping the invasive Himalayan Balsam flowers in check and planting around 50 hazel trees. You will notice that these hazels are planted very densely. These hazels will be managed by coppicing them approximately every 7 or 8 years. Coppicing means cutting the tree right back, close to the ground. Most native and naturalised deciduous trees don't die when they are cut down like this, instead they send up multiple new stems. Either side of the board walk, towards the playground end, you can see several multi-trunked sycamore trees. These have been coppiced in the past. The management plan for the wood, drawn up by HEG in discussion with landowners Hendred Estate, is to coppice one sycamore stand each winter to bring these sycamores back into coppice management, without changing the woodland appearance too fast.



Why Coppice?

Traditionally much of England's woodland was managed by coppicing to produce a continuous supply of greenwood for utensils, tools, fencing and furniture. As a result, much of our woodland wildlife, plant and animal, thrives on the mix of cover that coppicing produces in woodland.

To find out more about Hendreds Environment Group, including our local conservation work parties, contact Sarah James on 831568 or sarahjames@f2s.com

Downs Golden Age

On 1st September the DGA held its A.G.M. and launched the new season. Sally, Pam and Agi resigned from the committee and were thanked for their hard work and Niall Duggan was welcomed as co-Chairman. The excellent programme of speakers prepared by Susie and Vicki was presented. Menus for the year have been agreed by Salvador and his team and Jean had suggestions for outings to research and book.

On 14th September there was an outing to Wells. The weather was excellent allowing members to browse in the excellent market, dine al fresco, visit the beautiful cathedral and relax in the grounds. The coach then took the group on to Street for a little retail therapy. The next outing was to Reading on 23rd November for Christmas Shopping.

At the October meeting the speaker was Robin Livett whose *Kalahari Adventure* gave a fascinating insight into the life of the animals in the Kalahari. The following Monday there was a fund raising Bridge Drive in Snells Hall. Many thanks to Jeni and Barbara who have started working alongside Salvador in the kitchen and Anne, Viv and Katy who helped the regular team to serve and clear. On 3rd November a full house enjoyed a delightful cottage pie followed by apple pie and cream. With wine and coffee as accompaniments members relaxed happily to listen to Angela Pawlyn's talk *Silk: from Cocoon to Scarf*. Angela gave a fascinating talk about the history of silk and showed the beautiful work she produces. The final meeting of 2011 will be the Christmas Lunch on THURSDAY 8TH DECEMBER at 1.00 pm. After lunch St Amand's choir will perform and the guests will join in with some well known carols. The first meeting of 2012 is on THURSDAY 5TH JANUARY at 1.00 pm. As always, new members are very welcome.

Betty Holliday 833400

Springline Players present

Charles Dickens and A Christmas Carol

In aid of the East Hendred Churches St Augustine's and St Mary's

On Thursday 8th and Friday 9th December at 7.30pm in St Augustine's Church

This is a dramatised reading with Carols and 'Ghosts' adapted from the novel that we all know and love. The performance begins with a brief outline on Charles Dickens and the Victorian Christmas.

All the well-known characters are represented in the dramatisation and the cast include three adults and eight children.

Tickets are £7.00 and can be obtained from the Hendred Village Shop



Springline Amateur Dramatics 2012 Theatre Workshops

Professionally run workshops.
Have fun and improve your acting and stage skills
Workshop venue – Snells Hall

Everyone is welcome to these professionally run workshops.
No previous acting skills required. Children welcome from age 11.

18th January 7-9pm Improvisation
Heidi Zimmerman, Outreach department Watermill Theatre

15th February 7-9.30pm Music & Dance
Tom Draper-Rodi, singer, tap dancer, cellist & Co-director of South Oxfordshire Youth Performing Arts (SOYPA)

14th March 7-9pm Script work
Heidi Zimmerman, Outreach department Watermill Theatre

18th April 7-9pm Staging the play
Heidi Zimmerman, Outreach department Watermill Theatre

16th May 7-10pm Mask: forget your face, use your body
Amy Standish – Director, GoBo Theatre

13th June 7-9pm Voice work
Heidi Zimmerman, Outreach department Watermill Theatre

Workshops are **FREE** to Springline members.

Non-members can join Springline at the first workshop for an annual fee of £10 and attend all the workshops for free. Or, pay £2 for each workshop – come along and watch and join in as you wish.

Snow building Competition

Dont forget if it snows, EHE will be holding a Snowman Competition on Dancing Hill, at 2.00pm Money prizes up for grabs. Ginger wine and Sweeties will be available, free
Tel Val 833973 for details

Hendred Stores & Post Office Christmas Opening Hours

Christmas Eve
6.00am – 12.00pm

Christmas Day
Closed

Boxing Day
Closed

Tuesday 27th December
Closed

Wednesday 28th December
6.00am – 6.00pm (Shop Only)

Thursday 29th December
6.00am – 6.00pm (Post Office 9.00am – 1.00pm)

Friday 30th December
8.00am – 4.00pm (Post Office 9.00am – 1.00pm)

Saturday 31st December 2011
Closed

Sunday 1st January 2012
Closed

Monday 2nd January 2012
Closed

Tuesday 3rd January 2012 onwards
Business as usual

Merry Christmas Everyone!



Knitted corsages for sale at Hendred Stores.
Prices from £2.50
All money raised will go to the restoration of Hendred Fire Pump

The Hendred Estate

East Hendred, Nr. Wantage

www.hendredestate.co.uk

The Hendred Estate manages over 40 properties, mainly 2/3 bedroomed cottages, which we make available to rent, unfurnished, on Assured Shorthold Tenancies in the village of East Hendred and surrounding area. We also have offices and commercial units, garages and grazing available to rent.

Visit our website for full particulars of current availability.

The Estate Office: Tel: 01235 821543

Fax: 01235 862087

email: office@hendredestate.co.uk

Planning Matters

11/01495/FUL Greensands - Demolition of existing house and erection of new 13 bed guest house. The Parish Council had a number of comments, concerned with pedestrian access, improved visibility for vehicle access to the A417 etc. Application Permitted on 8th November 2011

11/02362/FUL Thatched Cottage, Newbury Road - Demolition of existing garage, erection of new garage with room over. The Parish Council did not object. No decision Issued

11/01552/FUL Downside House, Newbury Road - Single storey extension to provide utility room, pantry & rear entrance. Single storey infill extension to provide ground floor wc. New canopy to main entrance. The Parish Council had no objections subject to the materials being used to be in keeping with the existing property. Application Permitted on 13th September 2011.

11/01668/FUL Hill View, Horn Lane - Erection of a two storey rear extension. This is an update to an application that has already been permitted. The Parish Council had no objections. Application Permitted on 27th October 2011

11/01627/FUL Building R55, RAL - Erection of a steel framed elevated external gas platform and new steel barrier to perimeter. The Parish Council had no objections. Application Permitted on 31st August 2011

11/01886/FUL Stoney Hedge House - Proposed loft conversion. The Parish Council had no objections. No decision issued.

11/01614/FUL The Port Hole, Cat Street - Installation of solar panels. The Parish Council did not object. Application Refused on 24th October 2011

11/01988/FUL 1 Mount Pleasant, Church Street - Single storey extension. The Parish Council had no objections. Application Refused on 4th November 2011

11/02020/FUL Building R55, RAL - installation of PVC extract ducts. The Parish Council had no objections. Application Permitted on 31st October 2011

11/02236/FUL Building 383, Medical Research Council, Harwell - Provision of new external exchange space incorporating erection of portal framed conservatory and external paving. The Parish Council had no objection. Application Permitted on 31st October 2011

11/02452/FUL Building R5.4 & R5.5 RAL - Recladding, first floor extension and link bridge. The Parish Council had no objections. Application Permitted on 7th November 2011

11/02448/FUL 1 The Spinney, Ford Lane - Amendment to new proposed garage. The Parish Council had no objection. No decision Issued

11/02484/FUL Chantry Cottage, Cat St - Single and two storey extension and loft conversion

The Parish Council had no objection

No decision Issued

Parish Council

Council meetings are held in Snells Hall at 8pm on the second Tuesday of each month. An Open Forum, in which parishioners may ask questions, starts at 8:30pm.

CLERK TO THE COUNCIL

Alison Hardisty
e-mail: easthendred.clerk@gmail.com

Tel: 861866

CHAIRMAN

Dr John Sharp, Inish Fail, Orchard Close
Tel: 833367, e-mail: J.V.Sharp@btinternet.com

DEPUTY CHAIRMAN

Mr Charles Pappenheim, Willow House, Horn Lane,
Tel: 835014

COUNCILLORS

Mr. Stephen Webb, Chapel House, Chapel Square,
Tel: 833395

Ms Janet Shelley, 1 Hill Side, Newbury Road ,
Tel: 07791266331

Mr John Baldwin, 29 White Road, Tel: 834141
Mr Mark Beddow, The Old Cottage, Cat Street,
Tel: 833725

Mr Bogdan Nedelkoff, Acacia House, Old Road,
Tel: 833937

Ms Sarah James, 3 Newbury Road, Tel: 831568

Mrs Felicity Jones, Brambles, Tudor Walk, Rowstock,
Tel: 832375

Council Working Groups

Allotments:	John Baldwin, Sarah James
Bulletin and website:	John Sharp, Charles Pappenheim, Bogdan Nedelkoff Charlotte Bambridge (Editor)
Courtesy lighting:	Janet Shelley, Charles Pappenheim
Playgrounds:	John Baldwin, Janet Shelley, Sarah James
Rights of way:	Charles Pappenheim, Mark Beddow
Finance:	John Sharp, Diana Wheeler, Charles Pappenheim, Stephen Webb

Council Representatives on Other Bodies

Harwell Liaison:	John Sharp, Stephen Webb
School Governors:	Veronica Paget
Snells Hall:	Sarah James
Sports Club:	Bogdan Nedelkoff
Howard Spicer Fund:	Ann Taylor, Diana Wheeler, Alison Hardisty
Transport:	Stephen Webb
NAG Police:	Edward Eyston, Janet Shelley

Information

POST OFFICE

Mondays, Tuesdays, Thursdays & Fridays: 9am-1pm

COLLECTIONS

Weekdays
7:00am & 16:15pm

Saturday
7:00am (Village Shop)

REFUSE COLLECTION

Non-Recyclables (grey bin)
Tuesday (fortnightly)

Food Waste (small green bin)
Tuesday (weekly)

Recycling (green bin)
Tuesday (fortnightly)

Garden Waste Only (brown bin)
Tuesday (fortnightly)

MOBILE LIBRARY

Alternate Wednesdays

White Road
11:15am

Church Street
11:35am – 11:50am

For more details tel. 771132 or 760185

COMMUNITY POLICEMEN

Thames Valley Police
0845 8505505

PC Steve Lynch P4662

PC Catherine Johnson C9753

DISTRICT

COUNCILLORS

Bill Jones
Brambles, Tudor Walk
Rowstock
Tel: 832375

Mike Murray
michael.murray@whitehorsedc.gov.uk
7 The Causeway
Steventon
Abingdon OX13 6SE

COUNTY COUNCILLOR

Iain Brown
iain.brown@oxfordshire.gov.uk

M.P.

Ed Vaizey
vaizeye@parliament.uk
House of Commons

Dec-Feb 2011

DEC
 Sat 3 Christmas Bazaar, Snells Hall, 2pm
 Thur 8 DGA Christmas Lunch, Snells Hall, 1pm
 'A Christmas Carol', St Augustine's,
 7.30pm
 Fri 9 'A Christmas Carol', St Augustine's,
 7.30pm
 Sun 11 Christmas Market, Snells Hall, 10.30am
 Wed 14 Walking Group Christmas Walk and
 Lunch, Start at Snells Hall, 9am
 Thur 15 W.I, Hendred House, 7.30pm
 Sat 17 Surgery with Mike Murray, Steventon
 Village Hall, 9am
 Reconciliation Service, St Mary's, 11am
 Thur 22 Christingle, St Augustine's, 4pm

JAN

Thur 5 DGA Meeting, Snells Hall, 7pm
 Wed 18 SADS 'Improvisation', Snells Hall, 7pm
 Thur 19 WI Meeting, Snells Hall, 7.30pm
 Wed 25 Coffee Morning, St Augustines, 10.30am
 Fri 27 Penney Lecture 'Surviving Planet Earth',
 St Augustine's, 7.30pm

FEB

Wed 15 SADS 'Music and Dance', Snells Hall,
 7pm
 Thur 16 WI Meeting, Snells Hall, 7.30pm
 Wed 29 Coffee Morning, St Augustine's,
 10.30am

Useful Contacts

CHURCHES St Augustine's CoE.....833235
 (www.acny.org.uk/4745)
HENDRED ESTATE.....821543
 (office@hendredestate.co.uk)
HENDRED STORES.....833123
PUBS *Eyston Arms*.....833320
The Plough.....833213
 (www.hendredplough.co.uk)
The Wheatshaf.....833229
 (www.thewheatshaf.org.uk)
SCHOOLS Hendreds School.....833379
 St Amands School.....833342
SPORTS Boneshaker (Graham Birks).....767079
 (www.bone-shaker.co.uk)
 Croquet (Gavin Beaumont).....833217
 Cricket (Ivan Mulford).....820316
 Football (Steve Mulford).....818027
 (www.easthendredafc.com)
 Rugby.....www.groverfc.co.uk
 Tennis.....862844 / 832926
 (www.hendredtennis.co.uk)
SNELLS HALL *Bookings*.....833561
Payphone.....831555
CUCKHAMLSLEY SCOUT GROUP.....www.1stcuckhamsley.co.uk
HENDREDS PRE-SCHOOL.....831555
HENDREDS' FAMILY SHOW.....www.hendredsfamilyshow.org
HENDREDS HERITAGE.....www.easthendredmuseum.co.uk
VILLAGEWEBSITE.....www.hendred.org
DOCTORS *Church Street Practice, Mably Way*.....770245
Newbury Street Practice, Mably Way....763451

Regular Events

MONDAY **Scouts** 7-9pm, Snells Hall
 (Richard Tingley, 07771 545006)
TUESDAY **Cub Scouts** 6.30-8pm, Snells Hall
 (Robin Gray, 769787)
Beaver Scouts 5.25-6.25pm, Snells Hall
WEDNESDAY **Walking Group** 9.30am, meet at Snells Hall
 (Susie Turnbull 833797)
Mother & Toddler Group, 10-12am,
 Snells Hall (Clara Williams, 833204)
**Children's African drumming and percus-
 sion workshop**, 5-6pm, Snell's
 Hall (Kim Gajraj, 07811 041308)
African drumming for adults, 6.30-8.30pm,
 Snell's Hall, (Kim Gajraj,
 07811 041308)
THURSDAY **Bowls** 7.45-10pm, Snells Hall
 (Ken Taylor, 833359)
FRIDAY **The Village Thrift Shop**, 1-4pm, Rectory
 Room (Tin Hut)
SATURDAY **Soccer School**, 10.30-11.30, Mill Lane Sports
 Ground
 (Richard Frost, 07882352214,
richard_frost@hotmail.co.uk)
WEEKDAYS **Preschool**, 9-12am, Snells Hall
 (Fiona Brown 831555
www.hendredspreschool.org.uk)
MONTHLY **Snells Hall Management Meeting**, 7.45,
 Snells Hall Committee Room, **1st Tuesday**
Downs Golden Age, Snells Hall,
1st Thursday (Betty Holliday, 833400)
Parish Council Meeting, 8pm, Snells Hall,
2nd Tuesday
WI, 7.30pm, Snells Hall, **3rd Thursday**
Champs Chapel Museum, Easter to October
 2.30-4.30 **every Sunday**, November to
 Easter 2.30-3.30 **1st Sunday**

Church Services

Catholic Parish of St Mary

St. Mary's, East Hendred
 Tel: 833269

Sunday Mass

9.30am St Mary's,
 East Hendred

Parish Church of St Augustine of Canterbury

Rector:

Rev. Elizabeth Birch
 Tel: 833235

Usually Holy Communion
 is at 10:30am, but please
 check the noticeboard at
 the church door.

Last Wednesday in the
 month - Coffee Morning
 in church 10:30am

The Bulletin

Please submit all contributions, and
 diary listings for both the *Bulletin*
 and the Village Website to the
 Editor, preferably electronically.

Events can be included up to 12
 months in advance.

EDITOR Charlotte Bambridge
mbambridge@hotmail.com
 831793

Webmaster Charles Pappenheim
webmaster@hendred.org

PRODUCTION AND EDITING
 John Sharp

REGULAR CONTRIBUTORS
 John Sharp
 Margaret Sharp
 Jennie Cosgrave
 Ken Taylor
 Sarah James
 Anne Pappenheim
 Susie Turnball

ADVERTISING
 Charles Pappenheim
 835014

The *Bulletin* is published by East
 Hendred Parish Council. Opinions
 expressed are not necessarily
 those of the council.

All telephone numbers are local
 unless otherwise stated.
 (Area code 01235)

EMERGENCY SERVICES *Electricity*.....0845 7708090
Gas.....0800 111999
Water.....0845 9200800
HOSPITALS www.oxfordshire.nhs.uk
Churchill.....01865 741841
John Radcliffe.....01865 741166
Nuffield Orthopedic.....01865 741155
Wantage Community.....**01235 205801**
Headquarters.....01865 846000
Non-emergency calls.....08458 505505
Wantage.....**776048**
RAIL *National*.....0845 7484950
Oxford.....01865 722333
VALE OF WHITE HORSE DISTRICT COUNCIL.....520202
DIDCOT Leisure Centre.....811250
WANTAGE Civic Hall.....764696
 Library.....762291
 Recreation Centre.....766201
 The Independent Advice Centre.....765348
 Tourist Information.....760176
 Vale & Downland Museum.....771447
PRE-SCHOOL.....831555
 (www.hendredspreschool.org.uk)
BUSES Thames Travel (Mon-Sat).....01491 837988
 R.H. Transport (Sun & Bank Holidays).....
01993 869100