

EAST HENDRED *Bulletin*



The welcome return of the Nativity Procession, on 21st December 2014, organised by Hendred Hatters

Opportunity to Join the Council and Look After this Fine Parish

The Parish Council looks after planning matters, children's playgrounds, public spaces, rights of way, street lighting and public safety, produces the Bulletin, runs the village website and contributes to many aspects of living in the parish.

Councillors hold the position on a voluntary basis, live in the parish of East Hendred, which includes West Rowstock, and take part in the monthly Council meetings.

If you are interested in joining the Parish Council or finding out more, please contact any of the Councillors (see p.15).

Elections are on 7th May, and nominations must be in by 9th April.

Village Telephone Box to House a Defibrillator

A defibrillator can save the life of someone in cardiac arrest, and has to be on hand so it can be used fast. Installing a public-access defibrillator in the heart of the village could make a huge difference in a medical emergency.

Public phone boxes are hardly used now, but we can 'adopt' our phone box (for £1) and use it for other purposes.

A generous anonymous donor has offered £1000 towards a defibrillator to be housed in our phone box, and will match further funds raised by the village (the total cost is about £1500). Martin Johnson of Hendred Stores has volunteered to raise the money needed, Please support him generously!

The new defibrillator will back up our Community First Response team, who work with the Ambulance Service responding to 999 calls.

Defibrillators can be used by people without formal training, but South Central Ambulance Service have kindly offered a familiarisation course to those who would like it.

The first thing to do in any emergency is call 999 and that's how you will get access to the village defibrillator when it is installed.

Good news!

A controlled Puffin-type crossing is to be installed to connect the new housing development north of the A417 to the main part of the village. Residents of the new houses will have to cross the busy A417 to reach the amenities in the village. A traffic-light controlled crossing is far safer than an uncontrolled crossing so it will be a great improvement.

The Parish Council is very pleased that Pye Homes, Oxfordshire Highways and the Vale DC all agreed to this change. Many thanks to all residents who supported the Parish Council's lengthy campaign to get a safer crossing.

Big Bucks for Bicycling

The Local Plan for the Vale of White Horse is being reviewed at present and gives high priority to the Science Vale initiative. This is all about setting up high technology development centres at Harwell, Milton Park, Culham and Grove. Great emphasis is being placed on locating new housing close to these growing employment centres, to try to avoid adding large amounts of longer-distance commuter traffic to our crowded roads.

Part of this strategy is to encourage the use of bicycles for journeys to work and the very large sum of £4.5 million is to be invested in improving cycle routes in the area.

In the immediate area, the Parish Councils are pushing for viable cycle routes from Wantage to the Harwell Campus and Milton Park, which will also help people cycling between East and West Hendred, Rowstock and Ardington.

Along with this *Bulletin*, we are distributing a questionnaire to find out how much use this route is likely to get, when built. Please play your part by filling in the questionnaire on paper or online.

Money for the Village from Housing Developments

Funds are available from house building projects to improve the amenities in the community affected by the development. The Parish Council is compiling a list of potential improvements should such funding become available. These include improvements to the children's play facilities, particularly the safety surfaces which are at present bark, and new or replacement play equipment. We welcome ideas from residents on possible improvements.

Application to Build 26 More Houses

The Pye Homes development north of the A417 is nearing completion, and now an application to build 26 more houses has been made. This is the largest proposed development in the village for over 60 years. The Parish Council has objected on several grounds. First, the Appeal Inspector who approved the first phase required a buffer zone separating it from the agricultural land beyond, which the second phase would breach. Second, the Council fears that the development would become a separate community from the main village with limited connectivity across the A417.

The application went to the Vale District Council Planning Committee in early February. The Vale Planning Office recommended acceptance, on the grounds that the Vale District Council does not yet have a five year housing supply and an accepted Local Plan – the main reason that the first phase was approved at appeal – and this outweighs the argument that building in open countryside is against accepted planning practice. The Vale Council was also concerned that if this application were granted on appeal, it might have to pay the developer's costs.

The chair of the Parish Council (Dr. Sharp) and two residents spoke against the application as well as Bill Jones (our District Councillor) and

Janet Shelley (a District Councillor and also one of our Parish Councillors) in a lengthy discussion by the Planning Committee. It was observed that had the required housing supply and Local Plan been in place, this application would have been rejected without question. When put to the vote, six councillors voted to accept the application and seven against. The formal reason for rejection was that extension into open countryside outweighs the lack of planned housing supply. The developer may appeal against this decision, but the Parish Council will strongly object and hope the next Appeal Inspector recognises the undesirability of creating "north Hendred".

Oxfordshire Highways News

Oxfordshire County Council has recently published its Long Term Plan No.4 (LTP4) for consultation. For the first time this plan is committed to improvements to the A417 and it also covers cycling (see separate article). Policy SV2.10 covers delivering improvements along the A417 corridor to address congestion, safety and the conflict between the volume of traffic, east-west travel and access to the villages.

The Parish Council has campaigned to get these improvements for some time and it is encouraging that there is now some commitment (albeit in a general sense) to plan for improvements.

A recent County Hall meeting of local Parish Councillors, chaired by Stewart Lilly (our County Councillor), was held

to discuss the stretch of the A417 between Wantage and Blewbury. The request for a 50mph speed limit between West Hendred and Wantage has now been approved and will be implemented in the next 4-6 weeks.

The agreement to add a traffic light-controlled Puffin crossing to the Pye Homes development was seen as one of the achievements since the previous meeting.

The planned changes to Featherbed Lane are progressing although these will be in two stages; the first is already underway but the removal of the "dog-leg" can only progress once land ownership issues have been agreed. There are also plans to widen the road section between the new traffic lights at the junction of Featherbed Lane with the A4130 and the traffic lights at the Steventon turn. Sources of funding are available and the proposed next steps for the A417 locally include a review to reduce speed limits to 30mph,

including the stretch of the A417 through East Hendred.

There will also be some detailed planning of junctions at both Ardington and East Hendred (White Road); both of these are on the County Council list.

A crossing at the West Hendred junction, particularly to enable bus users to cross the road safely, is also under consideration. There was also discussion on potential cycle routes with commitments to develop links between Wantage and the Harwell Campus and Wantage and Milton Park (see page 1).

The Parish Council will be responding to the consultation on LTP4 and would welcome any inputs from residents on this important issue. The deadline for comments is 2nd April 2015. You can find the plan at <https://www.oxfordshire.gov.uk/cms/content/local-transport-plan-ltp4>

Broadband Update

The fairly patiently arrival of fibre-based internet service in East Hendred took place in January, as part of the OCC's "Better Broadband for Oxfordshire" initiative.

The speed is significantly greater than that of the copper-based service, and the main advantage over what we had before is that the data rate does not drop off during peak times.

We have what is called "Fibre to the Cabinet", which means that there is a fibre-optic cable to the green cabinet at the corner of Couplings Close and White Road, and our houses continue to be connected to the cabinet by copper wires, which are the main limiting factor on speed.

All internet service providers should be able to deliver the fibre-based service - contact yours if you are interested.



**East Hendred
Spring Fayre
25th May 2015
2 - 5 pm**

from the chair

Planning has again dominated the Parish Council agenda. The application by Pye Homes to build a further 26 houses north of the A417, involved the Council in significant work, objections to the planning application and speaking at the relevant meeting of the Vale Planning Committee. As reported elsewhere in this *Bulletin* the application was rejected on a narrow majority, which was good news. It may go to appeal and we will object vigorously to it at that stage as well. The Parish Council has considered that resisting further development north of the A417 is a critical factor in retaining a main community identity not bisected by a busy main road.

One success has been the agreement by Pye Homes to install a safer controlled Puffin-type crossing for the 21 houses currently being built. The involvement of the Parish Council supported by the village has been a critical factor in achieving this.

It is good news that at last the County Council's latest Long Term Transport Plan identifies the need for improvements to the A417. We hope that one outcome from this will be a roundabout at the junction of White Road with the A417, which will ease getting in and out of the

village at peak times. There will also be a roundabout at the junction of Featherbed Lane with the A417; the impact of these two junctions close together on traffic flow is as yet unknown.

We are sorry to lose Bill Watkin as a Parish Councillor because he has moved out of the village. Despite only being with the Council for a short period he has had a significant impact on Council business. We wish Bill and Christine well in their new home.

We also said thank you to Diana Wheeker who has been our Minute Secretary and Finance Officer over many years, and resigned at the start of the year. We are very grateful for her work for the Council and wish her well. These roles will now be taken over by Julia Evans, our Clerk; it is usual for a Parish Clerk to carry out all three roles, which were separated because of the time constraints of a previous Clerk.

As a result of Bill's resignation, a casual vacancy was advertised in February and we are pleased to welcome Chris Bedford as a new councillor. He works as a lawyer at Williams in Grove; he and his family live in Cat Street.

In May there may be elections for a new Council and we know that two of our current members are standing down so we hope that there will be new people standing for election to the Council.

John Sharp

Parish Council Precept

The Parish Council receives its income from the Vale of White Horse District Council. Each year, when submitting its budget for the coming year, the Parish Council applies for a precept from the Vale to fund its activities over the coming year. These include paying for the costs of the village lengthman and our Clerk, as well as funding maintenance of village facilities such as the playgrounds and maintaining council-owned trees. Other costs include grants to village organisations, insurance, courtesy lighting and the *Bulletin*.

The PC keeps costs under tight control, so that increases are as small as possible.

The budget for 2015/16 was agreed at the Parish Council meeting in January. This year there may be an election for the Parish Council in May and the cost has to be borne by the Council. We were surprised that the cost of an election has increased very substantially since 2010 – we have been recommended to allocate £2000 to cover elections costs. As a result the village precept for the coming year has increased by 10%. If there is no election the allocated sum will be carried over into 2016, resulting in a lower precept that year.

Rowstock

West Rowstock became part of East Hendred Parish in 2011, and each month we have Rowstock listed on the Parish Council agenda to discuss issues relevant to this part of our parish. We also discuss any issues from our lengthman and the litter picker who covers the Rowstock area. This part of our parish was represented on the Parish Council by Felicity Jones, who lived in Tudor Walk, until her untimely death in 2013, and we would like to have more detailed coverage of West Rowstock matters again.

Agendas for our Parish Council meetings are displayed on the notice board in Rowstock, and we have an open forum at each meeting for all residents of East Hendred Parish to present any items that the Parish Council may be able to help with. Alternatively emails or letters can be sent to our clerk (contact details on page 15 of this *Bulletin*).

This May there will be elections to Parish Councils across the country and we hope that candidates who could represent West Rowstock will come forward. Details of how to apply will be published shortly.

Grants Available for Village Organisations

The Parish Council is keen to support village organisations, and each year it allocates grants to help them carry out their plans or extend their activities. To obtain a grant, organisations should apply to the Clerk, normally including a set of recent financial accounts, and applications will be discussed at a Council meeting. A grant from the Parish Council is often very helpful and in some cases even a requirement to obtain funding from other grant sources, including the District and County Councils.



SPRINGBUILD CONSTRUCTION

- EXTENSIONS
- RENOVATIONS
- LOFT AND GARAGE CONVERSIONS
- LANDSCAPING
- ALL ASPECTS OF BUILDING WORK UNDERTAKEN

FOR A FREE QUOTE CONTACT SIMON RITSON ON 01235 510298

Mobile: 07795 104027

Email: simon@springbuildconstruction.com

Website: www.springbuildconstruction.com

Monk's Court

East Hendred
Oxfordshire



Monks Court Bed & Breakfast

Newbury Road, East Hendred, OX12 8LG

01235 833797 / 07710 274653

susieturnbull@monkscourt.co.uk

www.monkscourt.co.uk



For all your local,
national and
international flower
orders

Visit our large Pet Department.
Shrubs and Pot Plants for all occasions.
National Gift Vouchers, the ideal present,
available in-store.

Charlton Road, Wantage. Oxon OX12 8EP
Tel: 01235 772700
www.charltonpark.net

Specialists in all aspects of Pest Control

- Agricultural
- Industrial
- Domestic



Also registered for Grain Fumigation

For a **Pest Free Environment**
call now on

**01367
820333**

Email: info@valegame.co.uk
www.valegame.co.uk



**YOUR DREAM TO BUY YOUR
OWN HOME IN EAST HENDRED
COULD BECOME A REALITY
WITH SHARED OWNERSHIP**



COMING SOON – 2 x 2 bedroom houses at Reading Road, East Hendred. Priority will be given to applicants living/working in East Hendred. Contact us now to register your interest before general release by calling the Home Sales Team on 01235 515900 or email homebuy@soha.co.uk. You can also visit our website to find out more about shared ownership www.sohahomeownership.co.uk

DON'T DELAY REGISTER TODAY

Buckram and Bump

Curtains, Roman Blinds, Pelmetts
etc

Designed for you...

Luxury interlined with tassels and
trims should you wish

Discounted designer fabrics and
curtain accessories

Tel 07753 198246

Downs Golden Age

It has been another busy few months for the club and we have gained some new members.

In December we had a wonderful Christmas party. Salvador and his "girls" produced a fantastic meal and Stella made the hall look very festive with her decorations. We had a visit from Father Christmas and there were gifts for all. The afternoon finished with a delightful entertainment by the choir from the Hendreds School.

In January we had another delicious lunch and then played Bingo and had a Quiz, all organised by Stella. Early February was our last lunch which was well attended. The speaker was Anne Borrowdale, giving us: 'Tales from an exam hall'. In March we revert to tea time meetings and the speaker will be Dan Allen, asking: 'What did you do in the war, granny?' On 16th March we will be holding a fund raising Bridge Drive at Snells Hall.

The DGA meets on the first Thursday of the month at Snells Hall and we always welcome new members and guests. For more information please ring Susie on 833797 or email susie@monks court.co.uk



East Hendred Community Centre – Snells Hall

Those who attended Springline's very successful Robin Hood pantomime will have been impressed by the splendid scenery, performance, and indeed the efforts of all those involved. These were supplemented by the professional-looking array of the hall's new chairs, which now include an additional fifty seats purchased mainly through an anonymous donation. With its location and many features Snells Hall is widely recognised as being an excellent venue for a variety of events for upward of a hundred people, as well as for smaller gatherings.

The Hall's financial statements have just been passed to our auditor for the annual review at the AGM. Our income depends on regular and occasional users to a similar extent, on rental from Snells House and on fund raising.

The effort needed to maintain the premises in fine order and to host the many events (these average at least one per day over a year) is provided by the small Management Committee and the Wardens.

We really need more people to be involved in running the hall to ensure that it can be sustained in the long term. We would welcome more involvement and support from the community – particularly from hall users. Please do come along to the AGM. at Snells Hall, 8.15 p.m. on Tuesday, 7th April, which will provide a good chance to find out about the running of the hall, and think about joining us.

The annual Christmas Bazaar held at the beginning of December in aid of the Community Centre and the two Churches was a great success with the highlight again being the performance by the Pre-school junior choir, with many proud parents watching. The Bazaar raised over £500 for the Community Centre, which goes towards improving and maintaining the hall facilities.

We were sorry to learn of the recent death of Tony Gracie and to express our condolences to Iris and all Tony's family. Tony will be especially remembered for fine efforts with limited rehearsal and amateur singers to produce excellent performances of The Messiah and The Creation, for example, at Come and Sing events held at St. Augustine's.



Hendreds Pre-school *Is your toddler almost two?*

They could attend Hendreds Pre-school, where we offer a safe and stimulating environment in which your child will learn and thrive. We take two year olds (including funded children) and once your child is 3 they will receive 5 sessions free!

The Pre-school staff are highly qualified, to level 6 and have many year experience. We are now open every morning and lunch time, with the option of staying until 3pm three days a week. For a visit or a chat contact us.

To arrange a visit, call our Supervisor, Susan Heakin, on 01235 831555.

To discuss places and grant funding call Nicola Prescott (Membership Secretary) on 01235 832026 or email nicolaprescott@btinternet.com

<http://www.hendredspreschool.org>

Welcome to East Hendred

New residents are always welcome here!

A Welcome Book is available to let people know about the many organisations, facilities and activities in the village.

If you would like a copy, please contact Lesley Hunter on 01235 835092 or by email at lesley.hendred@gmail.com

Pippa's Guardians

Become a host family for an international student.
For pupils from
Abingdon Boys School or Headington Girls School.
Do you have a spare room in your house?
It doesn't matter what age you are!

Exeats and half-term only

Good daily payments.

See www.pippasguardians.co.uk

To contact us call:

Ben Hughes on
07714 034749
or email:

ben@pippasguardians.co.uk

Glovers

Plumbing & Tiling



- Bathrooms
- Plumbing
- Heating
- Wall & Floor Tiling
- Property Maintenance

Tel: 01235 768613

Mobile: 07850 687903/07590 220095

Web: www.glovers.plumbing

E-mail: gloversplumbingandtiling@gmail.com



Do you need a Helping Hand?

Our **East Hendred** care team has been providing award winning quality homecare since 1989.

A family run company we offer you a **one-to-one** 24 hour live in care service that enables you or your loved one to remain at home with compassion and dignity by assisting with: personal care, companionship, errands and housekeeping.

So if you are looking for an **alternative to residential care** or as a **short term answer** whilst recovering from illness or operation - then we're here to help.

To find out how we can help you,
call: 0808 180 1017 or
visit: www.helpinghands.co.uk



DRC

CONSTRUCTION (WANTAGE) LTD

A FULL BUILDING SERVICE

Construction, Extension, Alteration,
Renovation, Conversion, Installation

For a free quotation please call David or Lucia

0773 251 6364 or 01865 327564

NO JOB TOO BIG OR TOO SMALL

WWW.DRCCONSTRUCTION.CO.UK

Wantage Health & Wellbeing Centre

(formerly Wantage Day Centre)

3 Course Meal for £5.00

Treat yourself to a hot,
nutritious 3 course meal.

Please book before

10:00am on the day.

Monday - Friday for 12:00

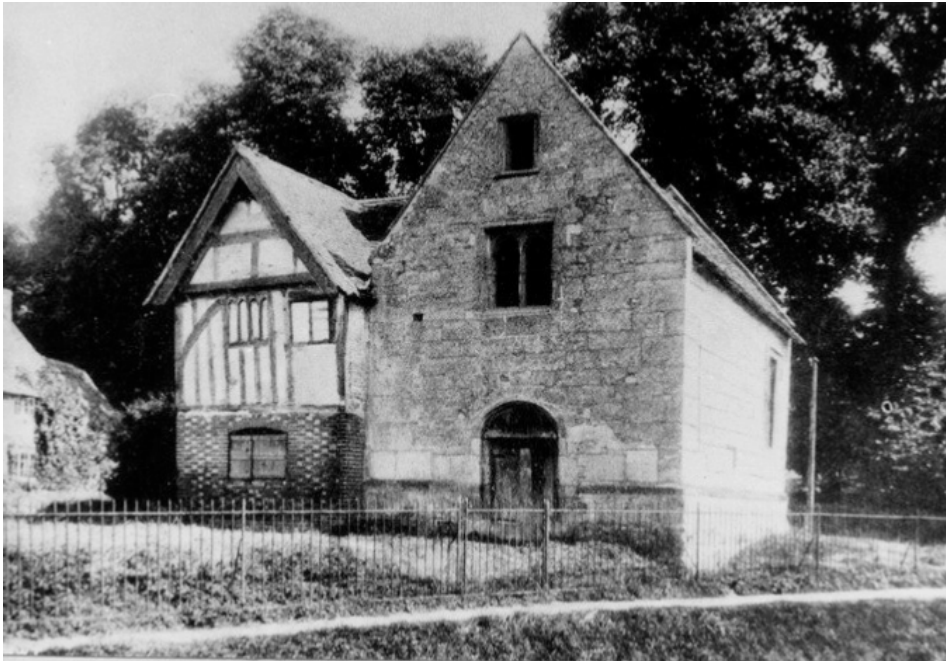
Everyone Welcome – Please Pop In
and Make New Friends

Tel: (01235) 765934

Museum Focuses on Cat Street in Annual 2015 Exhibition

Champs Chapel Museum of East Hendred, in Chapel Square

Open every Sunday 2.30 - 4.30pm
27 April to 26 October



Champs Chapel and attached priest's house in 1919.
© East Hendred Heritage Trust, ref. no. EHHT-2009-01762

Summer must be nearly here – the village museum will soon be opening its doors again on Sunday afternoons with a new 2015 ‘Secret Life of Your Street’ exhibition focusing on Cat Street

Be sure to go and visit the Museum. Whether you were born in the village or a newcomer, here for a fleeting stay, just working in the village or the are the longest living inhabitant of the village, it won't fail to give you a wonderful sense of what makes East Hendred a very special place. As well as the Secret Life Exhibition, the Museum also displays artefacts, paintings, and photographs about East Hendred

Champs Chapel Museum

And even if you don't go for any other reason, go to the Museum to see the Chapel it is in. It's a gem. East Hendred is overflowing with listed buildings; there are over 60 properties in the village listed Grade 2

or 2* by English Heritage, but the Chapel and the attached priest's house was listed in 1951 almost as soon as listing began, and is the only Grade 1 building we have in East Hendred, making it as significant on the National Heritage Register as St Paul's Cathedral. St Paul's is the second largest Church building in the UK with an area of over 6000 square metres, but Champs is just under 35 square metres.

So what makes Champs so special? It is one of only three surviving medieval stone buildings in East Hendred. It was built around 1450 for the outlying Hendred manor (now known as King's Manor) which Henry V confiscated from the French Priory of Noyon and gave to his newly established (1414) Royal Carthusian Priory in Sheen (Richmond) known as the House of Jesus of Bethlehem. For over 100 years the Chapel was the epicentre of the Carthusian manor but

then things got messy. In 1539 the Priory in Sheen was closed down in Henry VIII's Dissolution of the Monasteries, and its properties and lands including King's Manor, were seized and returned to royal ownership. Eventually the Manor's chapel was sold off into lay hands.

And having been built as a religious chapel for one of the most austere Roman Catholic orders, the profaned Hendred chapel became a pigeon loft, bake-house and wash-house gradually falling into terrible disrepair, but eventually saved in the 20th Century from dereliction and restored by the Eyston family.

It has been the village museum since 1975.

PLEASE SUPPORT YOUR VILLAGE MUSEUM

Champs Chapel Museum is run by East Hendred Heritage Trust, a charity made up of a handful of dedicated volunteers.

It is a fully accredited Museum, a wonderful treasure trove in the middle of your village, and we would love your support.

Come and share your memories of the village with us. Or volunteer a bit of your time in the Museum, there are lots of different ways you can help (contact Sonia Roberts on 01235 821796 after 6pm).

It costs over £8000 just to open our doors - help us

- **By simply visiting the Museum and seeing the Annual Exhibition – see above for opening times.**
- **By coming to the fund raising auction at Hendred on Sunday 20th June 2015.**

Wanted!

East Hendred Heritage Trust is looking for someone to join our team of volunteers to actively record current events and changes within East Hendred for posterity.

The person would be someone who has a keen interest in East Hendred and who is likely to attend events or obtain information/pictures from others who do, as well as from local newspapers and other relevant publications. It is a sociable role as much as a record keeper.

If you are interested then please contact Sonia Roberts (821796 after 6pm).



Snells Hall, East Hendred

For hire for: Parties, Shows, Meetings – one-off or regular, Large & Small Rooms, Kitchen, Licensed bar, Garden available
WiFi, PA System, T-Loop

Bookings and Enquiries:

01235 833561
snellshall@hendred.org
hendred.org/snellshall.htm

Hazel Lee
Painter and Decorator

Interior and Exterior

Fully Insured

Tel: 07866 509683

**A day out at
Millets Farm Centre**

- FARM SHOP
- GARDEN CENTRE
- RESTAURANTS
- 'PICK YOUR OWN'
- FALCONRY CENTRE
- CHILDRENS PLAY AREA
- FARM ZOO
- PHOEBE WOOD
- SEASONAL EVENTS
- CRAFT SHACK

OPEN
9am–5.30pm
7 days a week

FREE PARKING for 800 cars

Millets Farm Centre,
Kingston Road, Frilford,
Near Abingdon OX13 5HB

Millets
Farm Centre

A taste of the countryside at its natural best

www.milletsfarmcentre.com

**trotter
treeworks**



Ian Trotter – arborist
NC Arb, ISA Cert Arb

- tree crown reducing/
thinning/lifting/reshaping
- pollarding
- tree felling/dismantling
- fruit tree pruning
- hedge trimming/removals

t: 01235 258575
m: 07771 538575

www.trottertreeworks.co.uk

MILLBROOK SERVICES

**PROFESSIONAL WINDOW
CLEANING**

**COMMERCIAL/DOMESTIC
PROPERTIES**

*Gutter Cleaning, Drives and
Patios Steam Cleaned,
End of Tenancy Cleans*

**FULLY INSURED AND RELIABLE
TELEPHONE 01235 511541**

MOBILE 0797 00 51111

*Email: millbrook1@fsmail.net
www.millbrookcleaning.co.uk*

**48 CRONSHAW CLOSE
DIDCOT OX11 7JU**

Springline Productions: Robin Hood

Everyone who came to Springline's Pantomime this year really enjoyed the whole experience. We had the largest cast ever with some of the Junior Chorus taking major roles and they were fantastic.

The stage setting, lighting and sound were amazing as was the cast.

To sum it all up we asked Vern and Lilly Dunkley, two of the newcomers to the group, to give us their impressions of the show:



Robin Hood's New Recruits

In 2013 we were lucky enough to be in the audience for the Springline panto, Snow White. We were highly impressed with the standard of the production, especially when compared to other local productions we had seen and been involved in over the years.

When we heard that this year's panto was again to be directed by Jo Noble, we were keen to be on board. From the first rehearsal we were delighted at the welcome we were given, and the enthusiasm of every cast and crew member.

With Jo once again at the helm, the age-old story of wealth versus poverty – goodies and baddies – was told with gusto, glamour and the usual groan-worthy panto jokes.

Another newcomer this year was the wonderful Matt Winkworth, who joined as Musical Director – we all had fantastic fun with Matt's creative voice warm-ups, and even those who didn't think they could sing found themselves singing – and in harmony – under Matt's direction.

After four months rehearsing with our ever positive and patient directors, Snells Hall hosted a roaring success, as Robin and his Merry Men triumphed over the evil Sheriff and his incompetent henchmen. The hall was packed out for every performance, and appreciative audiences joined in the booing and hissing with great enthusiasm, and even got to their feet for a rousing chorus of 'Robin Hood Riding through the Glen' (with actions!)

Our personal highlight was the Queen song *Bohemian Rhapsody* – Matt Winkworth re-wrote some of the adapted lyrics to tell the tale of a trial between the goodies and baddies, with Robin Hood under arrest.

So thank you Springline for the welcome you gave us as newcomers but most of all a HUGE thank you to every person involved in this amazing production – cast, crew, and our wonderful audiences! We'll be back – watch out for a thriller to be put on at Snells in October!





ARBOCARE LTD.
TREE AND
GARDEN
SPECIALISTS

NATIONAL TRUST
APPROVED ARBORIST

- Established 20 years
- Tree surgery & landscaping
- Tree survey / reports
- Grass & hedge cutting
- Fencing

Cert Arb RFS (Distinction)

Freephone 0808 155 5815

Mobile 07778 811 136

www.arbocare.co.uk



TÖPTÖES

Victoria North
Podiatry BSc (Hons) MChS

Podiatry Clinics & Home Visiting Service

New Wootton Podiatry Clinic, Besselsleigh Road
Open Monday to Saturday 9am-1pm (from 2nd February)

Mornings

Mon to Sat - Wootton Clinic (Besselsleigh Road, OX13 6DN)

Afternoons

Mon, Thur & Fri - The Malthouse GP (Abingdon)

Tues & Wed - Home Visits throughout Oxfordshire

- | | | |
|--------------------------------|------------------------|-------------------|
| * Dry/cracked heels removal | * Callus removal | * Toenail Surgery |
| * Relief from ingrown toenails | * Corn removal | * Biomechanics |
| * Verrucae Treatments | * Nail cutting service | * Orthotics |

Hcpc registered, CRB checked, insured, professional & confidential



www.toptoes.co.uk

victoria@toptoes.co.uk 07751 827347

Planning for Appropriate Development



town planning consultants

monks court
newbury road
east hendred
OX12 8LG

contact. roger turnbull

tel. 01235 862 554

mob. 07860 338278

INDEPENDENT ADVICE CENTRE

16 Market Place, Wantage
(behind Barclays Bank)

FREE Advice Service –

Debt, Benefits,
Employment, Consumer
plus many more.

Transport & Good Neighbour

Schemes
01235 765348

help@wantageadvice.org.uk
Reg. Charity 270992

The Hendred Estate

East Hendred, Nr. Wantage

www.hendredestate.co.uk

The Hendred Estate manages over 40 properties, mainly 2/3 bedroomed cottages, which we make available to rent, unfurnished, on Assured Shorthold Tenancies in the village of East Hendred and surrounding area. We also have offices and commercial units, garages and grazing available to rent.

Visit our website for full particulars of current availability.

The Estate Office: Tel: 01235 821543

Fax: 01235 862087

email: office@hendredestate.co.uk

Church News

Services for Holy Week and Easter in the Benefice of Wantage Downs

Services for Holy Week and Easter are distributed among all the parishes of the Benefice. As last year, the evening services in Holy Week will include reflective addresses connected around a single theme. You are warmly invited to attend all our services.

Sunday 29th March - Palm Sunday

9.00am	West Hendred	Holy Communion
10.30am	East Hendred	Holy Communion
6.00pm	Lockinge	Palm Sunday Evening Service with procession of palms (weather permitting)

Monday 30th March - Monday in Holy Week

7.00pm	East Hendred	Holy Communion
--------	--------------	----------------

Tuesday 31st March - Tuesday in Holy Week

7.00pm	Ardington	Holy Communion
--------	-----------	----------------

Wednesday 1st April - Wednesday in Holy Week

7.00pm	West Hendred	Holy Communion
--------	--------------	----------------

Thursday 2nd April - Maundy Thursday

7.00pm	Lockinge	Eucharist of the Last Supper, Footwashing and Stripping of the Altars
--------	----------	---

Friday 3rd April - Good Friday

9.00am	West Hendred	Family Service
10.30am	Ardington	Family Service
12 noon	East Hendred	Ecumenical Stations of the Cross around East Hendred, starting at Champs Chapel
2pm	East Hendred	Good Friday Liturgy

Sunday 5th April - Easter Sunday

8.00am	Ardington	Holy Communion
9.00am	West Hendred	Holy Communion
10.30am	East Hendred	Holy Communion

Advance notice: St Augustine's Summer Fete will be on Saturday 6th June, from 2pm, in the church.

EAST HENDRED CATHOLIC PARISH HOLY WEEK AND EASTER 2015

PALM SUNDAY OF THE PASSION OF THE LORD (29TH MARCH) Commemoration of the Lord's Entrance into Jerusalem:

9.30 am Champs Chapel (weather permitting)
followed by

Mass:	St Mary's, East Hendred
Mass:	11.15am St Patrick's, East Ilsley

MONDAY IN HOLY WEEK (30TH MARCH)

No Mass

TUESDAY IN HOLY WEEK (31ST MARCH)

Adoration:	8.45am	St Mary's
Mass:	9.15am	St Mary's

WEDNESDAY IN HOLY WEEK (1ST APRIL)

Adoration:	11.45am	St Mary's
Mass:	12.15pm	St Mary's

MAUNDY THURSDAY (2ND APRIL)

Morning Prayer:	9am	St Mary's
Confessions:	7.15pm	St Mary's

Mass of the Lord's Supper: 8pm St Mary's

followed by the Watch of the Passion at Hendred House until midnight

GOOD FRIDAY (3RD APRIL)

Morning Prayer:	9am	St Mary's
Confessions:	9.30am	St Mary's

Ecumenical Stations of the Cross: 12 noon *beginning at Champs Chapel*

Celebration of the Passion of the Lord: 3pm St Mary's

HOLY SATURDAY (4TH APRIL)

Morning Prayer:	9am	St Mary's
-----------------	-----	-----------

Easter Vigil in the Holy Night

(with the Sacrament of Confirmation): 8pm St Mary's

EASTER SUNDAY (5TH APRIL)

Mass:	9.30am	St Mary's, East Hendred
Mass:	11.15am	St Patrick's, East Ilsley

YOUR LOCAL PLANT & TOOL HIRE & GARDEN MACHINERY CENTRE

Sales - Service - Hire - Repair



POLARIS

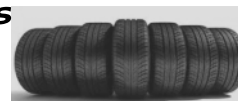
Tools & Ironmongery
Safety Signs
Dickies Workwear
Vehicle Maintenance

Tyres - Commercial Vehicle Repairs

- * Special Weekend Hire Rates
- * Competitive Prices



We now supply and fit Tyres



A helping hand to shape your land

Please call and visit our shop at:- Challow House Farm, Main Street, East Challow

Tel: 01235 763103



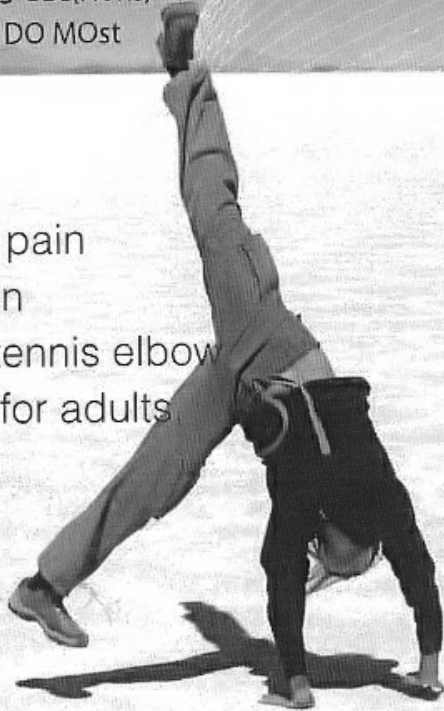
WANTAGE OSTEOPATHIC PRACTICE

AND SPORTS INJURY CLINIC

Katherine J Harris BSc(Ost)
Tina Darnell BSc(Hons)
Kathryn Lucas-Clements BSc(Hons)Ost
Amy S Norman BSc(BMS) DO MOst

Treatment for:

- Back pain
- Headaches & neck pain
- Joint & muscle strain
- Frozen shoulder & tennis elbow
- Cranial osteopathy for adults
babies & children
- Sports injuries
- Sciatica
- Arthritic pain



01235 768748

1 Church Street Wantage Oxon OX12 8BL
www.wantageosteopathicpractice.co.uk

BUPA & PPP registered

Hendred Chatters Local Community Radio Show!

Every Tuesday from 8 - 9pm, tune into StudyVox FM-
www.studyvoxfm.com - and catch the Hendred Chatters talking all things local, always looking for interesting stories and guests on the show! Catch us on StudyVox FM or follow the link from www.hendredchatters.org

djm
telecom Ltd

VOICE
AND
DATA
INSTALLATION

New & Used Telephone Systems
Telephones & Fax Machines
Extension Sockets
Structured Wiring
Cat 5E, Cat 6, Fibre
Least Cost Routing
PA Systems
Voicemail

HellermannTyton
A SPRINT Company



Panasonic



Tel: 01235 833422

Fax: 01235 834136

Email: sales@djmtele.com

Web: www.djmtele.com

Unit 6, Old Estate Yard, East Hendred, Wantage, Oxon, OX12 8JZ

Domestic & Insurance work specialists
Traditional plastering
with a modern, professional service!



Over 20 yrs of clean, quality finishing!

Visit our website for more info & our extensive list of services

www.southernplastering.co.uk
01235-814413 07956-586778



SP
COURIER SERVICES

- ◆ SAME DAY UK Delivery/Collection
- ◆ Furniture and Appliances moved
- ◆ eBay Collection & Delivery
- ◆ House Moving Assistance

Tel: (01235) 524589 Mobile: 07721 679487

Chief's Awards for Top Cubs!

Two of the Cubs from 1st Cuckhamsley Cub Scout Pack have achieved the highest award achievable in cubs the Chief Scout Silver Award. Josh Broadbent (10) and Findlay MacGillivray-Edwards (10) have both been enthusiastic, hard working members of the local cub pack who meet at Snells Hall every Tuesday 6.30 until 8 and both thoroughly deserved their awards. Their awards were presented by the District Commissioner, Gill Sharpe, at a special cub night and they will also get to attend an exciting Awards Day.

Beaver Scout Sheona MacGillivray-Edwards has also gained the highest award in Beavers the Chief Scout Bronze Award and three more Cubs: Emily Shearman; Kale Sheriff and Pierre Hanlet will very soon gain their Silver awards too.

All these children are a credit to the 1st Cuckhamsley Scout Group who all strive to achieve their best and have lots of fun too in all the activities they do.

Over the winter term they have had many adventures, but the greatest challenge to the cubs was the night they met up to have campfire, on what turned out to be the wettest night of the year. However, every single cub managed to light their own fire with only a few bits of kindling and a fire steel. Parents were amazed and the leaders very proud!

If your child is between the age of 8-10 ½ or nearly 8 and you want to find out more about Cubs or go on the joining list please contact Mhairi on 01235 820249.

If they are between the age of 6-8 or approaching 6 and you want to find out more about Beavers or go on the joining list then please contact Vicki on 01235 833544.

If they are 10 ½ - 14 and you want find out more about Scouts or go on the joining list then please contact Rich T on 07771545006.

The groups are run by volunteers and they are always happy to have help in whatever form, so please contact the above numbers if you can help in any way.



Hendreds Pre-School

The Hendreds Pre-school is very proud to announce that the long-awaited alterations to the Pre-school have been completed. The corridor into the Pre-school has been widened to provide a more spacious reception area and the changes to the toilet doors has now allowed natural light into this area, making it much more pleasant.

Thanks to these alterations, the Pre-school now has more space allowing them to improve fun facilities for the children. It's been a joint effort by the Pre-school committee and parents, with many ideas and alterations along the way!

Jenni and Katherine would like to say a huge thank you to all involved, everyone's efforts are really appreciated!

Seasoned Firewood from
Sustainable Local Sources

LOGS
FOR ALL
SEASONED FIREWOOD - DELIVERED



FSC
www.fsc.org

FSC® C092548

The mark of
responsible forestry

Call us now, on **0845 269 0306**, or
go online at **www.logsforall.co.uk**

because forests matter...

The Walking Group

The walking group has soldiered on through the winter, sometimes with a large turn out and sometimes only two or three stalwart walkers in the rain! We have also had some lovely sunny days and have enjoyed walks round Blewbury and the Ridgeway as well as our normal routes round the Hendreds and Ardington. Hopefully spring is just around the corner and we can start taking off a few coats and scarves!

The walking group meets every Wednesday at 9.30 at Snells hall. Everyone is welcome. We usually walk for about 2 hours with a coffee break.

For more information please ring Susie on 833797 or email Susie@monks court.co.uk



Hendreds Twinning Group

We are planning to visit our twin village, Sarceaux, near Argentan in Normandy for a long weekend starting on 3rd July, travelling from the village by coach via Portsmouth. This year we will be arriving in Sarceaux late on Friday evening and staying for three nights, leaving on the Monday morning to travel back to the Hendreds. The cost for the whole weekend is £195 for an adult but only £12 for each child which is heavily subsidised by our fund raising activities. We already have a number of families signed up to go and are looking forward to another enjoyable weekend staying with families in a French village.

Our recent fund raising event, a Feast of Local Food, was successful with 50 people attending. The cooks provided a welcome selection of six different dishes for each of three courses, with as many ingredients as possible sourced within 10 miles of the village. The speaker was Meg Noble from Sheepdrove Farm. She explained the activities at the organic farm which started in 1997, the same year that the Hendreds Twinning Group started. We were interested to hear of how the farm had achieved accredited 'organic' status, its rare breeds programme, its commitment to wildlife and biodiversity as well as the range of products sold by the farm.

Anyone interested in joining the July weekend please contact Margaret Sharp (833367, m.l.r.sharp@btinternet.com) or Leslie Lewis (863184, Lesley.lewis@avondale.co.uk)



East & West Hendred WI

Not wanting to 'blow our own trumpet' but what a talented group we proved to be in November by making Christmas rings and centre pieces with Snells Hall floor covered in every possible type of greenery. Pauline Fretter kept us all on the right track and the end results were truly wonderful. November also saw a group outing for lunch to Savages Garden Centre.

Edward and Ali Eyston once again kindly invited us to attend Hendred House where Pervin Shahin, who started as a junior exhibitor at the Royal College of Music and a member of the National Youth Orchestra, played her magnificent harp and accompanied members in singing carols. It was a very festive and enjoyable evening.

January was our Birthday Party with entertainment from Jenni Matthews, a vocalist, musical director and workshop leader. Her mission is simple: to make singing accessible to everyone. Her enthusiasm was truly infectious with rousing renditions of 'Don't Cry for me Argentina' ringing out.

February brought Brigitte Applegarth, a member of the British Institute of Graphologists, to explain what graphology is, why it works and where it is used.

The subject of her talk was on sex and crime in handwriting and famous criminal handwritings.

In March, members will be enjoying a delicious fish supper followed by our Annual General Meeting. There will be a review of highlights from 2014, followed by voting for President and the Committee and will end with a discussion on the year ahead.

We are a lively welcoming group and meet on the third Thursday of the month at Snell Hall, East Hendred at 7.30pm. If you are new to the village or surrounding area, please come along and visit. We have a varied and interesting programme with many opportunities to make some wonderful new friends. Our 2015-16 syllabus is now complete and promises to be another bumper year.

Check out the web site for dates and the occasional location change showing details which meetings are open to visitors.

Website is www.hendredswi.com and contact is: lesley.Hendred@gmail.com.

Planning Matters

P13/V2544/FUL – Land north of the Reading Road, Solar Farm. The parish council does not object to the application, but has raised a number of issues including concerns about the public footpath and vehicular access to the site. This application has now gone to appeal and is awaiting a visit from the Planning Inspector.

P14/1626/FUL – Land to the rear of Lynwood, Reading Road. Erection of 4 detached houses. The Parish Council raised strong objections to this application on the grounds that the lack of a controlled crossing on the A417 means the application does not meet highway safety criteria. Objections were also raised on the impact to the character of the village, the lack of parking provision for Lynwood, lack of safe access to public rights of way and potential flood risks. Despite this, planning permission was granted in November.

P14/1676/HH – Wells Head, Newbury Road. Structural repairs, improved vehicular access and the removal of trees. The application for planning permission was refused and this has now gone to appeal. The Parish Council objected to this application because of the impact it would have on the character of the village. Awaiting a decision on the appeal.

P14/V1964/FUL – Development of a further 26 houses on land to the north of Portway Villas, Reading Road. The Parish Council strongly objected to this development. The main grounds for objection were the changes to the character of the village, the sustainability of the development and the lack of a clear northern boundary. The Parish Council presented its objection to the application at the Vale Planning Committee in January. Permission was refused.

P14/V2017/HH – Various extensions to Old Hickory, White Road. The Parish Council had no objections. Planning permission granted.

P14/V2107/LB – Dunelm - Horn Lane.

Application for listed building consent to insert horizontal boiler flue pipes through the external wall. The Parish Council had no objections. Planning permission granted.

P14/V2258/O – South Drive, Harwell. Outline permission to demolish the existing properties on the site and develop up to 120 new homes. The Parish Council had no strong views on this application but requested improvements to cycle routes and bus services to enhance transport links to the site. Awaiting a decision.

P14/V2455/HH and V2456/LB – Downside House, Newbury Road. Application for a first floor extension. The Parish Council had no objections. Planning permission granted.

P14/V2478/FUL – CLRC, RAL Harwell. New support building and office. The Parish Council is concerned about the level of information available for this application. On this basis the Parish Council supported the comments made by the North Wessex Downs AONB, seeking a holding objection until further information is available. Awaiting a decision by the Vale.

P14/V2668/FUL – External alterations to existing timber store at Aldfield Farm. The parish council had no objections to this application. Planning permission granted.

P15/V0036/AG – Initial consultation to establish whether planning permission was required for an extension to an existing agricultural store. The Parish Council had no comment to make on this consultation. The Planning Department decision was that a planning application was not required.

P15/V0122/HH – Ambler's End, Newbury Road. Application for the conversion of an integral garage to accommodation, the widening of driveway and other alterations. The parish council is still considering this application.

P15/V0164/HH and V0165/LB – The Cottage, Horn Lane. Planning application and application for Listed Building consent for a single storey extension and alterations. The parish council is considering this application.

Parish Council

Council meetings are held in Snells Hall at 7:30pm on the second Tuesday of each month. An Open Forum, in which parishioners may ask questions, starts at 8pm.

Clerk to the Council:

Mrs. Julia Evans, Moorcroft, Greenway, W. Hendred Tel: 833466

Chairman:

Dr John Sharp, Inish Fail, Orchard Close Tel: 833367

Deputy Chairman:

Mr Charles Pappenheim, Willow House, Horn Lane Tel: 835014

Councillors:

Mr Christian Bedford, Penny Green, Cat Street Tel 07966 661298

Mrs Fiona Fanthome, Pebble Cottage, Cat Street Tel 07775 446244

Mr Bogdan Nedelkoff, Acacia House, Old Road Tel: 833937

Ms Janet Shelley, 1 Hill Side, Newbury Rd Tel: 07791 266331

Mr Martin Simmonds, Portway Villa, Reading Rd Tel: 833544

Mr. Stephen Webb, Chapel House, Chapel Square Tel: 833395

Council Working Groups

Allotments: Bogdan Nedelkoff
Martin Simmonds

AONB: Stephen Webb

Bulletin: John Sharp
Charles Pappenheim

Courtesy lighting: Janet Shelley
Charles Pappenheim

Finance: John Sharp, Julia Evans
Stephen Webb

Lengthman: Charles Pappenheim
Bogdan Nedelkoff

Playgrounds: Diana Wheeler
Fiona Fanthome

Rights of way: Janet Shelley
Charles Pappenheim
Martin Simmonds

Council Representatives on Other Bodies

Harwell Liaison: John Sharp, Stephen Webb

Sports Club: Bogdan Nedelkoff

Howard Spicer

Fund: Ann Taylor, Barbara Smith

Transport: Stephen Webb

NAG Police: Janet Shelley

P15/V0136/LB – Application for listed building consent for the installation of a wood burning stove, a non-structural porch and a partition at Kings Manor, High Street. The parish council is considering this application.

P15/V0332/HH – Allins Barn, Allins Lane. Application for the erection of side extensions, a carport/workshop building and internal alterations. The parish council is considering this application.

Information

HENDRED STORES & POST OFFICE

Opening Hours:
Monday to Friday:
6am - 6pm

Saturday:
6am - 4pm

Sunday:
6am - 12 noon

POST COLLECTIONS

Weekdays
7:00am & 4:15pm

Saturday
7:00am (Hendred Stores)

REFUSE COLLECTION

Weekly on Tuesday:
Food Waste
(small green bin)

Alternate Tuesdays:
Non-Recyclables (grey bin)

Alternate Tuesdays:
Recycling (green bin) and
Garden Waste (brown bin)

POLICE

Thames Valley Police,
Tel: 101
PCSO Denise Clements,
Badge C9845

MOBILE LIBRARY

Alternate Wednesdays
11:05am - Snells Hall
11:25am - White Rd layby

DISTRICT COUNCILLORS

Bill Jones
bill.jones@
woodlandsbrook.co.uk

Mike Murray
michael.murray@
whitehorsedc.gov.uk
7 The Causeway
Steventon
Abingdon OX13 6SE

COUNTY COUNCILLOR

Stewart Lilly
Stewart.lilly@
oxfordshire.gov.uk

MEMBER OF PARLIAMENT

Ed Vaizey
vaizeye@parliament.uk
House of Commons,
London, SW1A 0AA

You can view the
Bulletin online at
www.hendred.org/news

March - June 2015

March	
16 th	DGA Bridge Drive, Snells Hall
April	
3 rd	Good Friday
5 th	Easter Sunday
7 th	Snells Hall AGM, Snells Hall
21 st	Annual Parish Meeting Snells Hall
27 th	Champs Chapel Museum reopens
May	
7 th	National and Local Elections
June	
6 th	St Augustine's Summer Fete
20 th	EHHT Auction

What's On?

To find out what's on in East and West Hendred in coming weeks, see www.hendred.org

To receive the *What's On in The Hendreds* email each week, send an email to events@hendred.org

The Hendred Hoot

The Hoot is a monthly publication, delivered to houses in the Hendreds area, giving information on local events.

To advertise an event in the Hoot, send an email to ehehendredhoot@gmail.com

Regular Events

Monday	Scouts 7 - 9pm, Snells Hall (Richard Tingley, 07771 545006)
Tuesday	Beaver Scouts 5.25 - 6.25pm, Snells Hall (Vicki Simmonds, 833544) Cub Scouts 6.30 - 8pm, Snells Hall (Mhairi McGillivray-Edwards, 820249) StudyVoxFM - Hendred Chatters 8 - 9pm, www.studyvoxfm.com
Wednesday	Walking Group 9.30am, meet at Snells Hall (Susie Turnbull, 833797) Mother & Toddler Group 10 -12am, Snells Hall (Clara Williams, 833204)
Sunday	Champs Chapel Museum 2:30 - 4:30pm, 27 th April to 26 th October
Weekdays	Pre-school , at Snells Hall 9 - 12 noon daily 12 - 3pm Weds and Thurs Susan Heakin, 831555 www.hendredspreschool.org
Monthly	Snells Hall Committee Meeting 7.45pm, Snells Hall Gallery, 1st Tuesday Parish Council Meeting 7.30pm, Snells Hall, 2nd Tuesday Coffee Morning 10.30am, St Augustines, Last Wednesday, except August and December Downs Golden Age Snells Hall, 1st Thursday Women's Institute 7.30pm, Usually Snells Hall, 3rd Thursday

Church Services

Parish Church of St Augustine of Canterbury

Rector:
Rev. Elizabeth Birch
Tel: 833235

Usually the Sunday service is at 10:30am, but please check the noticeboard at the church door or see What's On in The Hendreds

Catholic Parish of St Mary

Priest-in-Charge:
The Rev'd
Mgr Andrew Burnham
Tel: 01235 835038 or 07976437979

Email: aburnham@portsmouthdiocese.org.uk or Hendredandilsley@portsmouthdiocese.org.uk

Sunday Mass

9.30am St Mary's, East Hendred

The Bulletin

Please submit all contributions and diary listings for the *Bulletin* to the Editor, at bulletin@hendred.org

Events can be included up to 12 months in advance.

EDITOR
Charlotte Stewart
bulletin@hendred.org

PRODUCTION AND EDITING
John Sharp,
Charles Pappenheim

WEBMASTER
Charles Pappenheim
webmaster@hendred.org

REGULAR CONTRIBUTORS

John Sharp
Margaret Sharp
Lesley Hunter
Ken Taylor
Sarah James
Anne Pappenheim
Susie Turnbull

ADVERTISING
Charles Pappenheim
835014

The *Bulletin* is published by East Hendred Parish Council. Opinions expressed are not necessarily those of the PC. All telephone numbers are local (01235) unless otherwise stated.

Useful Contacts

HENDRED ESTATE 821543

HENDRED STORES 833123

PUBS The Eyston Arms 833320
The Plough 833213
The Wheatsheaf 833229

SCHOOLS Hendreds School 833379
St Amands School 833342
Hendreds Pre-school 831555

SPORTS Cricket (Ivan Mulford) 820316
Football (Steve Mulford) 818027
Tennis (Katie Denne) 821452

SNELLS HALL Bookings 833561
Payphone 831555

DOCTORS Church Street Practice
Mably Way 770245
Newbury Street Practice
Mably Way 763451

HOSPITALS Churchill 01865 741841
John Radcliffe 01865 741166
Nuffield Orthopedic 01865 741155
Wantage Community 01235 205801

Electricity Mains Problems 0845 7708090

Gas Leaks 0800 111999

Water Mains Problems 0845 9200800

Thames Valley Police - (non - emergency): 101

Rail Enquiries 0845 7484950

Buses (Thames Travel) 01491 837988

Vale of White Horse District Council 520202

WANTAGE

The Beacon (Civic Hall) 763456

Library 762291

Recreation Centre 766201

The Independent Advice Centre 765348

Tourist Information 760176

Vale & Downland Museum 771447

For website and email address details, see

www.hendred.org