

# EAST HENDRED *Bulletin*

## The Queen's 90th Birthday Street Party



*Imogen and Isabelle aboard the Royal Train*



*Cleo as Baby Bunting*

The forecast was mixed for Sunday 12<sup>th</sup> June so gazebos were put up along from the shop to the Eyston Arms. However the Sun came out shortly before the start. As these pictures show a good time was had by all.

Many thanks to Louise and her team for organising such a lovely afternoon.



*Chris Bedford and Olly Dimbylow on the way to winning the pram race*



*Jackie Francis with the cake*



*Linda and Chris singing with "the Queen"*

*The fancy dress photos are by Ali Foster. The others by Martin Wackenier.*

## Hendred Owl Day 10th July

Young and old alike came out to welcome our newest additions to the village - The Hendred Owls. Designed and created by Nick Speakman of 3DWood, the owls symbolise the history of Hendred in a beautiful and unique way. A trail was set up to allow people to find each owl and, with help of the information booklet, find out more about what they each represent. From the Knowledge Owl at Penney Playpark, to the Poppy Owl opposite the War Memorial, they were met with great admiration. To give the day a celebratory feel, there were also competitions, a BBQ, an owl weave, a performance from the Springline pop-up choir and a display of real owls from Chrissie's Owls.

A great time was had by all and for this we would like to give our appreciation and thanks to all volunteers involved at every stage in making this day a great success and leaving a wonderful legacy for the future of the village.



*Canadian Horned Owl with Knowledge Owl*

## Hundreds Ukulele Group

We were very sad to hear that Derek Witts had passed away in July. Among many contributions to village life since moving here in 2009, he set up the HUG (Hundred Ukulele Group) after enjoying a beginners' ukulele course at Denman College. At his funeral, members of the group played three tunes including Derek's favourite, 'How much is that Doggie in the Window?' A collection was taken for 'Bloodwise' which supports Leukaemia and Lymphoma research.

Thanks to Derek's initial vision and initiative, the HUG goes from strength to strength. It now has fifteen or so members and is playing two or three concerts a month at various venues with an expanding repertoire.

For more information about HUG contact  
Dave Parry (07796 674147)



Derek with HUG performing at  
St Augustine's Fete on 4<sup>th</sup> June

## Grass Cutting in the Village

Our lengthman, Brian Goodwin, cuts the grass in most village areas which are not privately owned. His efforts help keep the village looking smart. Brian is an employee of the Parish Council and his contract also includes cutting grass at the cemeteries for which the two churches pay for part of his time. We also employ a contractor to cut grass regularly at Rowstock, and in front of the new properties in Portway Close and at the White Road/Reading Road junction.

The Parish Council recently received a petition with over 50 signatures, regarding problems with the grass cutting in the Cat Street cemetery, particularly the length of the grass and grass cuttings making the cemetery look

untidy. Several parishioners came to the July Parish Council meeting to voice their concerns. We explained that St. Augustine's church owns the Cat Street cemetery and that Brian carries out the agreed number of hours each week in cutting the cemetery grass, as part of our contract with the churches.

In recent years, the Parish Council has provided a grant of 50% of the cost of grass cutting in the St Augustine's churchyard. We are reviewing the situation and the Council is arranging a meeting with representatives of St Augustine's Parochial Church Council to see what further can be done at a reasonable cost.

## East Hendred Community Centre

Frank and Maria have resigned as hall wardens; we thank them for their work over the last two and half years in keeping the hall in good shape. We advertised and interviewed four couples as potential wardens and have appointed John Grundy and Kimberley Tracey, who joined us at the beginning of September. Please support Kimberley and John as they learn the ropes!

Whilst Snells House was empty we took the opportunity to install gas-fired central heating which should be more efficient than the old night-storage heaters.

The number of hall bookings remains high, with new users joining our traditional ones, which is encouraging.

The hall management committee, which meets monthly, urgently needs new members. We particularly need someone who can take on the Treasurer's role. We now use custom software for bookings and an accounting package for managing the hall accounts, in order to streamline these processes. If you have the expertise and can find some time, taking on this position would be a great help to support a key village facility, used by most village organisations.

## Improved Bus Services

A new bus timetable started on the 24<sup>th</sup> July, with an increased half-hourly frequency for East Hendred on Mondays to Fridays. Direct buses to the Health Centre on Mably Way have been restored and direct buses now run to Faringdon for the first time. Services on Saturday continue to be hourly from East Hendred and half-hourly from Rowstock, but a Sunday service is only available from Rowstock. East Hendred now has regular direct buses to Harwell Campus, Didcot, Milton Park, Abingdon, Oxford, Wantage, Grove and Faringdon. Bus stops are on White Road and at The Plough.

The new routes have very complicated numbering, with buses changing number in Wantage, and occasionally in Didcot too. Buses are always numbered 32A or X32 at

East Hendred village, 38 between Wantage, the Health Centre and Grove and 67 between Wantage and Faringdon. Please check the timetable for details, a copy of which has been delivered with this Bulletin.

Real-time bus information is available from the Oxontime app or the Oxontime website (links for East Hendred are in the Transport section at [hendred.org](http://hendred.org))

During the closure of Blenheim Hill in Harwell, passengers for Harwell village or Didcot Hospital need to change to bus 32S at Rowstock.

Unfortunately, the dial-a-ride service no longer operates as the county council voted to end all bus subsidies. The twice-weekly A1 service has also ceased.

# from the chair

The five special owl sculptures are a welcome and distinctive addition to the village scene, and have brought many positive comments. A separate article in this Bulletin records the Owl Day on 10<sup>th</sup> July to inaugurate the owls. We have been asked by the residents at Portway Close if an owl can be installed in their part of the village and we will hope to find funds to do this. Any ideas for other features that would benefit the village are welcome.

Planning continues to occupy considerable Parish Council time and the key decisions which will be made this autumn could add over 100 new houses to the north of the village. The Parish Council is objecting to these developments as outlined below.

Having looked after my daughter's dog for the last three

weeks whilst she and her family have been on holiday, I have appreciated the location of the special dog bins around the village, having been very careful to set a good example by "binning it".

We are still short of one Parish Councillor and would particularly welcome a representative from West Rowstock so that this part of our parish can be fully represented (See overleaf.)

Information about village activities and achievements continues to be available from the village website and the excellent weekly email message "What's On in The Hendreds" produced by the Pappenheims. An update to the village web site is planned for this autumn.

John Sharp

## Update on Village Planning Applications

Since the last Bulletin the application for 48 houses as part of the Pye Homes phase 3 development has been to the Vale District Council Planning Committee, with a recommendation for approval from the Case Officer. John Sharp, Dair Farrar-Hockley and Mark Beddow spoke objecting to the application, the main issues being highway safety, impact on the setting of the AONB and the village itself. The developer's agent spoke in favour.

Following brief discussion the Committee decided that the application should be referred for further assessment, given significant concerns about a three-storey property in the middle of the development, lack of proper amenity space for some houses, lack of sufficient overall amenity space (taking into account the drainage storage pond) and highway safety. An amendment has just been submitted for consultation with the intention that the amended plans go to the September or October Planning Committee meeting.

Since the meeting the Parish Council has been in contact with the Case Officer over misinformation given at the meeting on the appeal inspectors' comments on the AONB for the Pye phase 1 and 2 developments. We have also been in contact with the Highway Officer to explain our concern about very limited sight-lines for the planned pedestrian crossing, and the limited space on the south side of the A417 to fit in a footway given the large hedge. This is shown by the photo with two large vehicles passing where the new crossing is planned. We are reviewing the amendment and will speak again at the Planning Committee to continue to object to this application.

The Parish Council has also received an amendment for the Greensands application (65 houses north of the A417). This consisted mainly of the applicant asserting that the proposed development would have minimal impact on the setting of the AONB (the proposed development is immediately opposite open fields in the AONB) and rejecting a recent appeal statement for Uffington where the inspector rejected the application for a development of 30 houses on grounds which included damage to the setting of the AONB. We responded citing comments from the North Wessex Downs AONB Planning officer who stated that "The proposed development would result in a disproportionate extension of the village which would overly urbanise the approach into the village and the setting of the

AONB". The report also stated that "The development is likely to cause moderate to adverse harm to the AONB". The Council used guidance from the North Wessex Downs AONB on development in the setting of an AONB. From this, three key bases for objection are:

- a. Developments which would have a significant visual impact on views in or out of the AONB;
- b. Loss or harm to heritage assets and natural landscape, particularly if these are contiguous with the AONB (as this case); and
- c. Developments individually or cumulatively giving rise to significantly increased traffic flows to and from the AONB, resulting in loss of tranquillity and erosion of the character of rural roads and lanes. (This certainly applies to East Hendred where roads in the village are already under great stress at certain times of the day.)

We also argued that the Uffington appeal case was relevant to damage to the setting of the AONB.

The Greensands application appeal will be held in Snells Hall on 29<sup>th</sup> November to 2<sup>nd</sup> December, when we will have a chance to put our case.



*Is there room for the proposed 3m wide footway for pedestrians and cyclists on the south side of the A 417?  
(RH side in photo)*

## Another Parish Councillor Needed

Our Parish Council normally consists of nine councillors and one position is currently vacant.

Can you help? The Parish Council is the first tier of local government, whose official purpose is to improve the quality of life and wellbeing in the community and deliver services to meet local needs.

In East Hendred, the PC reviews all planning applications, maintains playgrounds, public spaces and the courtesy lighting system, and ensures that other bodies (such as the county and district councils and housing associations) carry out their obligations to maintain public areas. The PC also initiates and carries out projects for the improvement of the village, makes grants to local organisations, runs the village website and publishes the quarterly East Hendred Bulletin. Councillors must live in the parish, and need to have done so for a year to qualify.

The PC meets once a month on a Tuesday evening. Councillors also attend meetings and carry out site visits when considering planning applications. Tasks are shared – you don't have to do everything – but we need full complement of Councillors to ensure everything gets done. Supporting and maintaining our excellent village and its community is interesting and satisfying.

Please consider whether this is a role you would like to take on.

If you would like more information, please contact our Clerk, Julia Evans by email at [easthendred.clerk@gmail.com](mailto:easthendred.clerk@gmail.com) or any of our parish councillors - see [www.hendred.org](http://www.hendred.org) or page 15 for contact details.



For all your local, national and international flower orders

Visit our large Pet Department.  
Shrubs and Pot Plants for all occasions.  
National Gift Vouchers, the ideal present,  
available in-store.

**Charlton Road, Wantage. Oxon OX12 8EP**  
**Tel: 01235 772700**  
[www.charltonpark.net](http://www.charltonpark.net)

**Specialists** in all aspects of **Pest Control**

- Agricultural
- Industrial
- Domestic

Also registered for Grain Fumigation

For a **Pest Free Environment**  
call now on

**01367 820333**

Email: [info@valegame.co.uk](mailto:info@valegame.co.uk)  
[www.valegame.co.uk](http://www.valegame.co.uk)



valegame  
Pest Control Services  
Established 1991



BPCA  
British Pest Control Association

## Hendreds Pre-school



At Hendreds Pre-school we offer a safe and stimulating environment in which your child will learn and thrive. We take children from two years and six months, and once your child is 3 they will receive five sessions free!

The Pre-school staff are highly qualified and have many years' experience. We are open all day, five days a week, 9am-3pm.

To arrange a visit, call our Supervisor,  
Susan Heakin, on 01235 831555,

## Buckram and Bump

Curtains, Roman Blinds, Pelmetts etc

Designed for you

Interior Design Service Available

Soft Furnishings & Furniture by Voyage Decoration

Discounted designer fabrics and curtain accessories

Tel Sharon Bunting 07753 198246

[www.buckramandbump.co.uk](http://www.buckramandbump.co.uk)

## East & West Hendred WI

At our May meeting we enjoyed a hilarious talk by former jockey and broadcaster Richard Pitman entitled "A Romp through Life" where we learnt about the shenanigans of horse racing and other colourful events. He generously donated his fee to our current local charities.

Kamran Irani from the Service by Emergency Rider Volunteers gave a fascinating talk in June about the wonderful, but largely unknown, nationwide service provided by volunteer motor cyclists to ferry hospital samples, x-rays, blood, breast milk and any other urgently needed items out of hours free of charge to the NHS.

Valerie Burton used to work at the Witney Blanket Company and spoke to us in July about the history and techniques involved in the industry. She brought many photos including one of the blankets being stretched on the tenterhooks around the fields in Witney, also items of equipment such as a beautiful shuttle. We hope to visit the Museum in Witney in the autumn.

Jill Broadley hosted a very pleasant Pimms evening in her lovely garden on 23<sup>rd</sup> July in aid of our charities and it was warm enough to sit outside all the time!

Our summer party was held at West Hendred Village Hall in August with lovely singing provided by Catherine Bulpitt.

### Forthcoming Events

13<sup>th</sup> September 2:30pm Rounders match v. Wantage WI

15<sup>th</sup> September 7:30pm "Pendon Museum – Modelling the Past for the Future" – David Day. The Museum has intricate models of local buildings such as Snells Hall and the bridge at West Hendred.

20<sup>th</sup> October 7:30pm "The Human Aspects of Airline Command" – Cyril Mannion. An RAF and civil pilot for many years talks us through the flying procedures.

1<sup>st</sup> November 2pm Walk round historic Wallingford with Norman Francis.

17<sup>th</sup> November 7:30pm "Christmas Wreaths and Crafts" – Christine Green. Learn how to make a wreath using fabric strips.

15<sup>th</sup> December 7:30pm Folk songs & Carols - Anno Domini (Members only) At Hendred House by kind invitation of the Eyston family.

Anne Pagett

## Downs Golden Age

In June we made our annual visit to Hendred House for tea. After tea Alistair Lack gave an interesting talk on *Oxford in the Civil War*. Then there was the opportunity to walk round the beautiful gardens of Hendred House.

The highlight of the year on 7<sup>th</sup> July was our **Golden Anniversary Lunch**. Stella, as always, made a huge effort to festoon the hall and tables with golden decorations and all the committee and members were asked to wear yellow or gold. We had a wonderful celebratory meal courtesy of Salvador, Barbara and Jeni. This was followed by the cutting of the magnificent cake by the Vice President Betty Holliday. After all the excitement the members were able to relax and be entertained by the excellent **Steventon Singers**. In August we had a tea and talk about *Secret London*.

An outing on Tuesday 21<sup>st</sup> June to Weston super Mare was much enjoyed by 32 members. It was a successful trip, it didn't rain and we did not lose anyone! Stella, of course was the star providing goody bags, street plans and hilarious raffle prizes.

The AGM is on 1<sup>st</sup> September.

If anyone would like to help with serving, clearing up or even making a pudding please contact Susie below. We always welcome new members and guests. It is only £12

per year and that covers all the lunches and teas, speakers and subsidised outings.

For more information please ring Susie on 833797 or email [susie@monkscourt.co.uk](mailto:susie@monkscourt.co.uk)

### Forthcoming events

13<sup>th</sup> September: a barge trip from Kintbury to Hungerford. To book a place ring Gaby (820473)

Monday 10<sup>th</sup> October: Bridge Drive, one of our main fundraising events of the year.



## Springline Productions

We will be performing another winter show this year, but this time it will be in December, giving it a much more festive feel. 'A Christmas Cracker' will take place over the Friday and Saturday evenings of the 9<sup>th</sup> and 10<sup>th</sup> December at Snells Hall with both performances being seated around tables with food and drinks. The first night will include a cheese board and the bar; the second night a three course meal and BYO booze! The show will once again be a mix of entertaining sketches and songs as well as a performance

from the Pop-up choir, including carols to get everyone in the Christmas mood!

We would love to have new members to join Springline Productions and this could be a great way to learn a little more of what we are about. Rehearsals will be Sunday afternoons and Thursday evenings starting from Sunday 30<sup>th</sup> October. Regrets, no children this time. If you would like to know more, please contact Clare Bedford on [clarebedford@hotmail.co.uk](mailto:clarebedford@hotmail.co.uk) or Susie Turnbull on [Susie@monkscourt.co.uk](mailto:Susie@monkscourt.co.uk)



**Abingdon Operatic Society**  
presents  
**'BARNUM'**  
**The Greatest Show on Earth**  
**Tue 25<sup>th</sup> - Sat 29<sup>th</sup> October 2016 - 7.30pm**  
**Special matinee performance Sat 29<sup>th</sup> 2.30pm**  
**Bringing the West End to your doorstep**  
**Book tickets now at:**  
**[www.abingdonoperatic.co.uk](http://www.abingdonoperatic.co.uk)**



## Glovers

### Plumbing & Tiling



- Bathrooms
- Plumbing
- Heating
- Wall & Floor Tiling
- Property Maintenance

☎: 01235 763253

☎: 07850 687903

🌐: [www.glovers.plumbing](http://www.glovers.plumbing)

✉: [gloversplumbingandtiling@gmail.com](mailto:gloversplumbingandtiling@gmail.com)

## Scotland's Ash Garage

MOT Testing 6 Days per Week  
Servicing to All Types of Vehicles  
Air Conditioning Specialists  
Tyres, Exhausts, Brakes, Clutches  
Body Repairs  
Selection of Courtesy Cars  
Specialists in Japanese Cars (including imports)  
Diagnostic Fault finding & Rectification

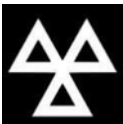
For any make of Car

[www.scotlandsashgarage.co.uk](http://www.scotlandsashgarage.co.uk)

Tel: 01235 850707

Main Street, West Hagbourne

Didcot OX11 0NA



## DIRTY CARPETS, UPHOLSTERY, RUGS



**Most carpets  
dry within the  
hour**

**Unbeatable  
results,  
removes  
almost all  
spots & stains**

**Call**

**GRIMEBUSTERS**

01865 726983 01235 555533

[www.grimebusters.co.uk](http://www.grimebusters.co.uk)

## OVENBLITZ

**OVENBLITZ CLEAN ANY  
OVEN, HOB, EXTRACTOR,  
MICROWAVE OR BBQ**

Using non-caustic and  
non-toxic products  
in your home -

Prices start from £35 for a  
single oven – please call

Peter Earnshaw

07749 597627

[ovenblitz@googlemail.com](mailto:ovenblitz@googlemail.com)

[www.ovenblitz.co.uk](http://www.ovenblitz.co.uk)

## Des Hurst

**Painter and Decorator**

Interior and exterior  
painting and decorating

**Dulux Select registered**

**Free estimates**

**No VAT**



All materials can be supplied.

All Dulux materials come with a  
12 month guarantee.

01235 833631 or 07747 632690

Email: [deshurst@btinternet.com](mailto:deshurst@btinternet.com)

## Wantage Health & Wellbeing Centre

Come and try a new activity and  
make new friends? We offer  
seated exercise class, hand  
massage, manicure and  
craft sessions.

(We are open Monday - Friday)

### Volunteering

Why not give volunteering a try –  
become part of our friendly team?  
It's not just about what you can do  
for others, it's rewarding for you too.

**Everyone Welcome – Please pop in  
and make new friends!**

**Tel: (01235) 765934**

## Hendreds Twinning Group

We welcomed 31 visitors from our twinned community of Sarceaux (near Argentan in Normandy) for the weekend of 9<sup>th</sup> -11<sup>th</sup> July. All stayed with local hosts in their own homes, and the programme included an initial welcome reception at Snells Hall, and a celebratory meal in Snells Hall on the Saturday evening, after two teams (adults and children) competed for the Aunt Sally challenge cup, but it unfortunately returned to France once again. We suspect they had been practising beforehand in France, giving them the edge over the home teams! Warwick Castle was a popular and well appreciated destination for the whole day outing on the Sunday, then the visitors departed after a very full weekend of activities early on the Monday morning.

It's our turn to travel to France next year (7<sup>th</sup>- 10<sup>th</sup> July) when we will be celebrating 20 years of twinning at a special event. We receive very generous hospitality when we are there, so it's a very inexpensive short break for

anyone who goes (particularly for accompanied children who are heavily subsidised from the proceeds of fundraising over the year). Places are available for anyone living in the Hendreds or surrounding area.

### Feast of Local Food, Snells Hall, Sunday 23<sup>rd</sup> October 12.30 p.m.

A delicious three-course lunch cooked using local produce (farm shops, allotments, gardens) or Fair Trade where appropriate. This will be followed by a talk by Martin Spray, CBE, of the Wildfowl and Wetland Trust.

All welcome – families, friends, visitors as well as members of the Twinning Group.

Tickets: £12.50 adults, £6 children. Bar available.

Twinning Group membership subscription: £10/year per household.

Lesley Lewis 863184 [lesley.lewis@avondale.co.uk](mailto:lesley.lewis@avondale.co.uk)

Margaret Sharp 833367 [m.l.r.sharp@btinternet.com](mailto:m.l.r.sharp@btinternet.com)

## Junior Tennis Coaching gets Going

June saw the start of a new junior coaching programme at Hendreds Tennis Club, in partnership with the Community Tennis Association. The sessions have been eagerly attended by boys and girls ranging from 5 to 14 years of age, from both local Hendred schools and further afield.

Lessons are delivered on Monday afternoons by an LTA level 3 coach, in three classes grouped by age:

4pm to 5pm - Mini Reds (Under 8s)

5pm to 6pm - Mini Orange/Green (8-10yrs)

6pm to 7pm - Junior Tennis (11+)

The one-hour sessions have kept the young players engaged with a number of drills that help learn the fundamentals of the game. At a basic level, this has involved games like Jail Break to raise awareness of the different areas of the court – an added bonus for parents being that it helped cultivate a healthy interest in Wimbledon viewing!

The coach has also been developing hand-eye coordination in the more junior players, as well as working across the age groups on stroke technique, getting players familiar with standing in the ready position, and introducing and improving serve technique, according to players' skill level. Classes have been received with a high level of enthusiasm that will hopefully inspire a future generation

of Hendreds Club members to keep the current membership on its toes.

Classes are continuing throughout the summer months and will extend into the Autumn term. If you are interested in learning more, visit [hendreds.ctatennis.org](http://hendreds.ctatennis.org) or contact [hello@ctatennis.org](mailto:hello@ctatennis.org).

Aisling O'Keeffe



Mini-reds focus on their next move

### Editorial note

I was pleased to receive the reports of the impressive cycling exploits (page 13) as well as the tennis report. I would like to include information about other sporting events in the Winter Bulletin. For example, I would be happy with a sentence or two about the junior football team or any new sport you have taken up as a result of GB's Rio successes. Please email to [bulletin@hendred.org](mailto:bulletin@hendred.org)



Threshing near East Hendred around 1900  
(from the EHHT collection) see page 11



**Snells Hall, East Hendred**

For hire for: Parties, Shows, Meetings – one-off or regular, Large & Small Rooms, Kitchen, Licensed bar, Garden available  
WiFi, PA System, T-Loop

**Bookings and Enquiries:**

01235 833561

[snellshall@hendred.org](mailto:snellshall@hendred.org)

[hendred.org/snellshall.htm](http://hendred.org/snellshall.htm)

# Hazel Lee

## Painter and Decorator

Interior and Exterior

Fully Insured

Tel: 07866 509683

A GREAT DAY  
OUT FOR ALL  
THE FAMILY!

Pick Your Own Events Restaurants Farm Zoo Falconry Centre Maize Maze Farm Shop Fishing Lake

Milletts FARM CENTRE

The Beach Picnic Areas Garden Centre Potting Shed Café Farm Zoo Craft Shack

Kingston Road | Frilford | Nr. Abingdon | OX13 5HB  
[www.millettsfarmcentre.com](http://www.millettsfarmcentre.com)

**Milletts**  
FARM CENTRE

# trotter treeworks



**Ian Trotter – arborist**

NC Arb, ISA Cert Arb

- tree crown reducing/thinning/lifting/reshaping
- pollarding
- tree felling/dismantling
- fruit tree pruning
- hedge trimming/removals

t: 01235 258575

m: 07771 538575

[www.trottertreeworks.co.uk](http://www.trottertreeworks.co.uk)

## Monk's Court

East Hendred  
Oxfordshire



### Monks Court Bed & Breakfast

Newbury Road, East Hendred, OX12 8LG

01235 833797 / 07710 274653

[susieturnbull@monkscourt.co.uk](mailto:susieturnbull@monkscourt.co.uk)

[www.monkscourt.co.uk](http://www.monkscourt.co.uk)



## East Hendred Catholic Parish

### LIFE AT ST MARY'S

The daily round continues. **Sung Mass at 9.30am on Sunday**, with Children's Liturgy in the Holy Family Room. There is another Sunday Mass too: St Patrick's, East Ilsley, at 11.15am. Weekday Masses at 9.15am on Mondays, Tuesdays, and Thursdays, at 12.15pm on Wednesdays, and at 8.30am on Fridays in Hendred House Chapel. On the first weekend of the month, there is also Mass on Saturday at 9.30am and, during the light months (including September and October), Sunday at 6pm at Milton Manor.

**Children's Liturgy Group.** During the summer when there is no Children's liturgy group, the Holy Family Room will be available with tables and activity sheets. Please feel free to take your children there during the readings and homily. The back door will be open. The group will resume on **Sunday 11<sup>th</sup> September** in the Holy Family Room.

**First Holy Communion at St Mary's.** If you would like your children to join the classes please email Maria Brown (address below). A meeting with parents will take place on **Sunday 25<sup>th</sup> September** after the 9.30am Mass.

**Harvest Home.** We shall be giving thanks for the Harvest on **Sunday 25<sup>th</sup> September** at the 9.30am Mass.

**All Saintside.** On **All Saints' Day (Tuesday 1<sup>st</sup> November)**, there will be an evening Mass at 8pm, as well as the usual Mass at 9.15am. On **All Souls' Day (Wednesday 2<sup>nd</sup> November)**, there will be a Requiem Mass at 12.15pm and another at 8pm. We hope too to organise a children's event for All Saints.

**Remembrance Sunday.** On 13<sup>th</sup> November, there will be the **Act of Remembrance at the War Memorial at 11am**, together with the congregation of St Augustine's and the whole village.

**St Amand's School.** About once a month – to mark seasons and holy days – staff and pupils of St Amand's come to St Mary's to the Monday 9.15am Mass. All Are Welcome.

**Contacts.** Fr Andrew tel 01235 835038, email [aburnham@portsmouthdiocese.org.uk](mailto:aburnham@portsmouthdiocese.org.uk) Maria Brown (Parish Administrator) email [hendred@portsmouthdiocese.org.uk](mailto:hendred@portsmouthdiocese.org.uk).

If you would like a pastoral visit – baptisms, marriage, sick visiting, house blessings – please be in touch.

## St Augustine's, East Hendred

This year our **Harvest Festival service** will be held on Sunday 2nd October at 10:30am, followed by a **ploughman's harvest lunch** in the church. Everyone is welcome to join us, but for catering purposes please let Jackie Francis know in advance that you are coming (tel 833473). The church will be decorated for the festival, so please drop in to have a look.

We're planning to hold a **Bingo evening** at Snells Hall on Friday 21<sup>st</sup> October at 7:30pm as a fund-raiser for the church. It costs over £80 a day just to keep our ancient Parish Church open – please come and help us, and enjoy a fun night out as well.

**Remembrance Sunday** falls this year on 13<sup>th</sup> November, when the communion service at St Augustine's will start early (at 9:45am) to enable the congregation to attend the **Act of Remembrance at the War Memorial at 11am** together with the congregation of St Mary's and the whole village.

Looking further ahead, we're planning a traditional service of **Nine Lessons and Carols** on Friday 16<sup>th</sup> December in the evening. Everyone is invited to come and enjoy what is for many people their favourite service of the year, retelling the story of Christmas in words and music. There'll also be a **Christingle** service before Christmas, date yet to be announced.

Meanwhile our regular **coffee mornings** continue, held in church from 10:30am on the last Wednesday of the month (28<sup>th</sup> September, 26<sup>th</sup> October and 30<sup>th</sup> November). Do come along – you will be made very welcome and the cakes are superb.

There's also an additional coffee morning in aid of **Save the Children**, on Wednesday 9 November, from 10:30am at Peeler's Cottage, Chapel Square – a chance to buy all your Christmas cards, wrapping paper and small presents without leaving the village. Again, everyone is invited.

**Everyone is warmly invited to all church services and events.**

You can always find the times of services on the notice boards and news sheets in church, the church websites, and in the weekly *What's On in the Hendreds* email messages.

## Annual Ride and Stride

**Both churches** are involved in the Annual Ride and Stride on **Saturday 10<sup>th</sup> September** in aid of Oxfordshire Historic Churches Trust. Both churches in East Hendred and St Amand's chapel in Hendred House will be open to visitors, along with hundreds of places of worship across Oxfordshire and many other counties. Half the money raised by Ride and Stride goes direct to the nominated

churches, and the rest is distributed in the form of grants for repairs and refurbishments. Take the opportunity for a day's 'church crawl' by bike or on foot, volunteer for an hour to meet and greet at one of our churches, or sign up as a sponsor. Forms and contact details are available in both churches and from [www.rideandstrideuk.org](http://www.rideandstrideuk.org)

**It's a team-cheering,  
socialising, few hours  
a week kind of job**

**Relief Workers**

If you can spare a few hours a week or more, this could be your ideal casual job. You'll be supporting people who have learning disabilities in your local community with a huge range of everyday tasks and activities like seeing films, swimming, cycling, shopping, meeting friends, and taking day trips. £8.55 ph (inclusive of payment in lieu of holiday) For more details, please contact Tina Watkins on 07767 298571 or for an application pack, call **01235 827605** (9am - 3pm, Mon-Fri) or apply online at [www.hft.org.uk](http://www.hft.org.uk) and go to the 'jobs' section.

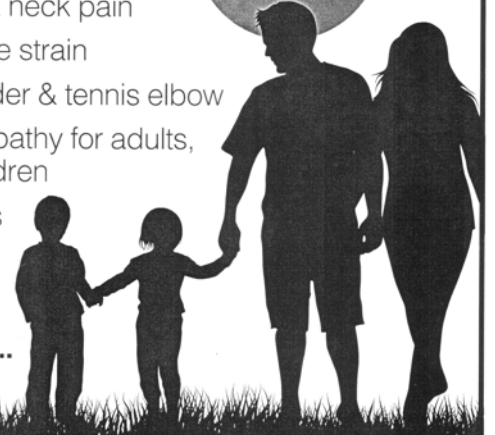


**WANTAGE  
OSTEOPATHIC  
PRACTICE**  
AND SPORTS INJURY CLINIC

Call  
**01235  
768 748**

- Back pain
- Headaches & neck pain
- Joint & muscle strain
- Frozen shoulder & tennis elbow
- Cranial osteopathy for adults, babies & children
- Sports injuries
- Sciatica
- Arthritic pain

**We can help...**



**Katherine J Harris** BSc(Ost)      1 Church Street  
**Tina Darnell** BSc(Hons)      Wantage  
**Amy Hewitt** BSc M(Ost)      Oxon  
**Kate Croxford** BSc M(Ost)      OX12 8BL

[www.wantageosteopathicpractice.co.uk](http://www.wantageosteopathicpractice.co.uk)  
BUPA & PPP registered

**YOUR LOCAL PLANT & TOOL HIRE &  
GARDEN MACHINERY CENTRE**

**Sales - Service - Hire - Repair**



- \* Special Weekend Hire Rates
- \* Competitive Prices
- \* Friendly Service



Tools & Ironmongery  
Safety Signs  
Dickies Workwear  
Vehicle Maintenance  
Rodent Prevention and much  
**Tyres - Commercial Vehicle Repairs**

**We now supply and  
fit Tyres**



Please call and visit our shop at:- Challow House Farm, Main Street, East Challow

**Tel: 01235 763103**

[www.ljcannings.co.uk](http://www.ljcannings.co.uk)

*A helping hand to shape your land*

**Volunteer for Oxfordshire's  
Water-Blitz**

Volunteers needed for one day only! Schools, local groups and individuals are invited to take part in the county wide water blitz. Check the water quality of your local stream, pond, ditch or river and help build a water quality picture for Oxfordshire. For your free sampling pack register today by emailing [hilary@wildoxfordshire.org.uk](mailto:hilary@wildoxfordshire.org.uk) and join in on 3rd October.

EarthWatch have volunteered to handle the data and map all results making resulting data available to everyone involved.

## East Hendred Heritage Trust

East Hendred Open Gardens 26<sup>th</sup> June 2016 – this is one of the most popular events in the East Hendred calendar and this year was no exception. We had around 310 visitors, and judging by the wonderful comments we had, they all had a lovely day. We were extremely lucky with the weather as the only shower of the day was at around 4:30pm and fortunately the hail storm the evening before didn't damage the blooms to be seen in all of the wonderful gardens. East Hendred Heritage Trust thanks everyone who opened their gardens and a special thanks to Edward & Ali Eyston for not only opening their garden and the private chapel but also to their whole family for providing the visitors with delicious afternoon tea! The Mulberry Band also played at Hendred House from 12pm to 3pm which was a very gentle accompaniment for the visitors walking around the garden or enjoying refreshments. We raised approximately £2,500 which will

go a long way to towards the annual running cost of the museum, which is approximately £4,000. The next Open Gardens will be in 2018 (as it is a bi-annual event) and if you would like to open your garden then please get in touch!

*History is happening all the time! We have recently had lots of exciting events in East Hendred and it would be a shame if we did not record them for posterity. If you have any photos of the Queen's 90th birthday celebrations or the beacon lighting please can you send them to us at East Hendred Heritage Trust so we can add them to the collection? Indeed we want to keep the archives growing with any village event so please let us have any photos you have taken ... contact us on [champschapel@googlemail.com](mailto:champschapel@googlemail.com) or on 821796 (after 6pm).*

## Farming Focus

We are now in the thick of harvest and it has reminded me that farmers are basically harvesters of sunshine via photosynthesis and our job is to maximise this by ensuring healthy well-fed plants that can grow efficiently and fulfil their maximum yield potential. Maybe we should be called "photosynthesis facilitators" rather than farmers!

Unfortunately whatever efforts we go to can be completely overshadowed if nature throws us a curved ball. This has happened this year with very low yields of barley and oilseed rape; both of these crops ripen early and suffered from lack of sunshine in June. Luckily the later maturing wheat crops were still photosynthesising when the sun finally came out in July and these crops are yielding fairly well.

Overall it is not going to be an epic harvest this year but the lower yields will be compensated to an extent by increased prices due to the weak pound post-Brexit.

Whilst we are busy gathering in the harvest it is amazing to see where we are at now with combine harvester output and technology.

Our current combine cost around quarter of a million pounds and is bristling with technical gizmos. I have written before about our controlled traffic and the fact that the combine steers itself with accuracy down to around 2cm. It also has cruise control which speeds it up and slows it down depending on the yield of crop going through it. All settings are adjusted electronically from the cab and gone are the days of grovelling in the dusty innards with spanners to make adjustments. The combine is also connected to the internet (referred to as Telematics) and all of its operational performance figures and settings can be viewed (and adjusted!) remotely if necessary. Theoretically

Telematics can also alert the machinery dealer if something is going wrong with the combine, with the idea being that a replacement part might be shipped to us and be on farm before we even knew there was a problem!

Regardless of all the technology, the basic machine is impressive in the way it cuts the crop, threshes the grains and chops and spreads the surplus straw at a workrate of up to 10 acres an hour.

Many farmers let the straw come out of the back of the combine harvester in a swath which is then baled and used for bedding /animal feed. We prefer to chop it all with the combine and return the carbon to the field to feed the soil biology.

*Julian Gold, Farm Manager Hendred Estate*



## Why is the Harvester called a "Combine"?

Until the middle of the 20<sup>th</sup> Century, the process involved two machines and two stages on many farms. The "Binder" cut the corn and tied it into sheaves, hence the name. Farm workers then propped groups of eight sheaves in a tent shaped structure called a "stook" to dry. (Grain dryers were not normally available).

The sheaves were then carted and stacked. Stacks used to be made in Smiths Rickyard, off Couplings Close.

Threshing took place throughout the year when the grain was needed because there were no large silos to store it. (See photo on page 7.) The grain was collected in sacks. The straw was either restacked, fed straight into a machine which made it into bales or chopped up into chaff. Chaff would be mixed with other ingredients to make winter cattle food.

*Angela Pawlyn*



**NATIONAL TRUST  
APPROVED ARBORIST**

- Established 20 years
- Tree surgery & landscaping
- Tree survey / reports
- Grass & hedge cutting
- Fencing

*Cert Arb RFS (Distinction)*

Freephone 0808 155 5815

Mobile 07778 811 136

[www.arbocare.co.uk](http://www.arbocare.co.uk)



# TÖPTÖES

## Podiatry Service

wootton clinic . GP surgery . home visits

Wootton Podiatry Clinic: Monday to Saturday 8:30am-4pm

The Malthouse Surgery: Thursdays & Fridays 8:30am-5pm

Home Visits : Mondays & Saturdays 9am-5pm



Gift vouchers available

All our podiatrists are hcpc registered, insured & experienced

\* New podiatrist joining our team September 2016 \*

**[www.toptoes.co.uk](http://www.toptoes.co.uk)**  
reception@toptoes.co.uk 01865 236050  
11b Besselsleigh Road, Wootton, OX13 6DN

## Planning for Appropriate Development



town planning consultants

monks court  
newbury road  
east hendred  
OX12 8LG

contact. roger turnbull

tel. 01235 862 554

mob. 07860 338278

### INDEPENDENT ADVICE CENTRE

16 Market Place, Wantage  
(behind Barclays Bank)

#### **FREE Advice Service –**

Debt, Benefits,  
Employment, Consumer  
plus many more.

#### **Transport & Good Neighbour**

Schemes

☎01235 765348

✉ [help@wantageadvice.org.uk](mailto:help@wantageadvice.org.uk)

Reg. Charity 270992

## The Hendred Estate

East Hendred, Nr. Wantage

[www.hendrestate.co.uk](http://www.hendrestate.co.uk)

**The Hendred Estate manages over 40 properties, mainly 2/3 bedroomed cottages, which we make available to rent, unfurnished, on Assured Shorthold Tenancies in the village of East Hendred and surrounding area. We also have offices and commercial units, garages and grazing available to rent.**

**Visit our website for full particulars of current availability.**

**The Estate Office: Tel: 01235 821543**

**Fax: 01235 862087**

**email: [office@hendrestate.co.uk](mailto:office@hendrestate.co.uk)**

### 24 hour Ride helps Macmillan Cancer Support

On Saturday 20<sup>th</sup> August Charlie Clayton, villager and keen road cyclist, joined almost 750 other riders in a bid to complete a 315 mile endurance rally from Newcastle to London in 24 hours. It was an event which challenged body and soul; one that required many hours of preparation in order to build up training miles. For example, over just three of his days of training, Charlie covered almost 600 miles not counting the many, many hours of fixed wheel training!

To add to the drama of the event, the weather took a turn for the worse which meant the riders faced a gusting head wind and squally showers for a good deal of the time. Starting off in Tyne and Wear, the Ride 24 course took cyclists through Durham, Yorkshire, Lincolnshire, Cambridgeshire, Hertfordshire and into Middlesex before terminating at Smithfield Market, London. The route featured six food and rest stops averaging between 40 and 50 miles apart; a very welcome sight as the hours ticked by on the long stretch south. Day turned to night and the riders continued on; passing through cities and towns with revellers spilling out on to the pavements until day broke once more.

Charlie battled on until the final 40 miles when he

reluctantly withdrew, having totally spent everything. He is keen to encourage support of the official rally charity, Macmillan Cancer Support, who are on hand to help anyone suffering from cancer. Donations can still be made to [macmillan.org.uk](http://macmillan.org.uk).



Charlie prepares to set off on a training ride.



Roger, Susie, Jane and Yvonne looking cheerful after 75 miles and huge WI tea.

### Tri Vets Century

On 19<sup>th</sup> June Yvonne Bird, Jane John, Roger and Susie Turnbull completed this 100 miles cycling tour of Oxfordshire in approximately 10 hours. This ride is held every 3 years for the over 50s. 75 Oxfordshire Veterans took part. They were blessed with perfect weather almost all the way and followed a very scenic circular route round the hills and valleys of the county. They were also extremely well fed by the WI and had a wonderful day.

### London to Brighton 2016

Sunday 19<sup>th</sup> June came around rather too quickly this year. Our promises of 'full-on' training had gone by the wayside and we were all a little nervous as the great day arrived. It was a perfect day for cycling, slightly overcast, not too hot, and little breeze. As we made our way to the start, there was much hilarity and revelry. This soon tailed off as we hit our first hill!

There were one or two mechanical failures and a few attacks of cramp, but the team made it to the finish with energy to spare.

This is a brilliant bike ride – so many crazy people in fancy dress and so much camaraderie. The route through East Sussex is breathtaking in places, with beautiful little villages that are not seen when you travel, as we too often do, by motor car. Even Ditchling Beacon, known as the Green Monster, is well worth all the pain and effort. The views from the summit are spectacular, north across the Wealds and East Sussex, and south over Brighton to the channel. Months of training and the sleepless nights are forgotten as you almost fly down the other side of the Beacon and roll into Brighton. Here the streets are lined with literally thousands of well-wishers cheering you on,

and a big lump appears in your throat as you round the corner onto Madeira Drive to a massive roar from the crowd as you pedal the last half mile to the finish line.

Altogether this year, our team (Louise, Martin and our two children, Zeta and Jonny) have raised in excess of £2,500. A huge thank you to our supporters for your continuing generosity and we look forward to next year with great anticipation!



Louise and Martin

**Domestic & Insurance work specialists**  
Traditional plastering  
with a modern, professional service!



Over 20 yrs of clean, quality finishing!

Visit our website for more info & our extensive list of services

[www.southernplastering.co.uk](http://www.southernplastering.co.uk)

01235-814413 07956-586778



**SP**  
COURIER SERVICES

- ◆ SAME DAY UK Delivery/Collection
- ◆ Furniture and Appliances moved
- ◆ EBay Collection & Delivery
- ◆ House Moving Assistance

Tel: (01235) 524589 Mobile: 07721 679487

*Do you want your child to achieve their full potential?*

**KS2 Literacy and Maths Tutor available for accelerated learning and boosting confidence!**

Will travel to local villages.  
For more information contact Julia Walker on 01235 770519 or 07897 194346.

*I have 25 years KS2 teaching experience and am currently working for Oxford Brookes as a University Tutor for student teachers.*

**LOCKINGE ESTATE  
JOINERY DEPARTMENT**



High Quality Bespoke Joinery  
Services include design, manufacture, delivery, installation and decoration as required

**Nigel Hutt** MCIAT MICWCI

Clerk of Works

The Estate Yard, East Lockinge, OX12 8QW

01235 833442 - [nhutt@lockinge-estate.co.uk](mailto:nhutt@lockinge-estate.co.uk)  
[www.lockinge-estate.co.uk](http://www.lockinge-estate.co.uk)

FENSA registered company

Member of bwf – British Woodworking Federation

**MILLBROOK SERVICES**

COMMERCIAL/DOMESTIC PROPERTIES  
PROFESSIONAL WINDOW CLEANING  
PROFESSIONAL CARPET CLEANING

End of Tenancy Cleans  
FULLY INSURED AND RELIABLE

TELEPHONE 01235 511541

MOBILE 0797 00 51111

Email: [millbrook1@fsmail.net](mailto:millbrook1@fsmail.net)

[www.millbrookcleaning.co.uk](http://www.millbrookcleaning.co.uk)

48 Cronshaw Close, Didcot OX11 7JU



Local  
**Techie**

WantageTechie.co.uk  
PC, Apple & Android



Training • Tech Support  
Recovery • Home Visits  
No call-out fee

01235 364080 07525 368812

## Planning Matters

P14/V2258/O – South Drive, Harwell. Outline permission to demolish the existing properties on the site and develop up to 120 new homes. The PC had no strong views on this application but requested improvements to cycle routes and bus services to enhance transport links to the site. Awaiting decision from the Vale.

P15/V2328/O - Mather House White Road and Greensands. Outline proposal for 10 homes for the elderly on the Mather site and 65 new homes on the Greensands site. Following a public meeting held on 10<sup>th</sup> November, the PC objected and the Vale refused planning permission in January. This application has gone to appeal. The PC has submitted its objection to the Appeal Inspector.

P15/V2560/FUL - Pye Homes phase 3. Proposal for a further 48 dwellings on the north of the A417 east of Portway Villas. A public meeting was held in January. A survey was subsequently carried out by OCC's archaeological team, but they did not consider the site to be of archaeological significance. A further public meeting was held in May. The PC has objected to this application on the grounds of the harm that would be caused to the AONB and the impact on the A417 and inadequate sight lines for the proposed pedestrian crossing. The application was heard at the Vale Planning Committee in July. It remains undetermined while further amendments to the plans are developed.

P16/V0235/O – Greensands and Mather House. Resubmission of the application for the development of 75 new homes on the Greensands and Mather House sites. Following a public meeting in May the PC has objected on the same grounds as it objected to the original submission.

P16/V0645/HH – Wayside, Rowstock. Application for single storey rear extension, new windows and internal alterations. The PC had no objection to this application. Permission has been granted.

P16/V688/FUL – Monks Court, Newbury Road. Construction of one new house. Although the PC did not object to this application it did raise some significant concerns and has requested that the application is taken to the Vale Planning Committee. Permission has been granted.

P16/V0723/LB - Church Place, Church Street. Listed building consent for work to chimney. The PC had no objection to this application. Permission has been granted.

P16/V0795/HH - Chantry Cottage, Cat Street. Application for 1) Erection of oak framed front porch on dwarf stone walls and new front door 2) Erection of single storey oak framed rear covered area (pergola/lean-to) with side gate at side passage entrance to new covered area. The PC had no objection to this application. Permission has been granted.

P16/V1224/HH - 4 Croom Cottages, Rowstock. Application for a two storey rear extension and extension of front porch. The PC had no objection to this application but did ask for consideration to be given to the provision of sufficient parking. Permission has been granted.

P16/V1375/HH and P16/V1376/LB – Downside House, Newbury Road. Application for ground floor rear extension to kitchen. The PC had no objection to this application. Permission has been granted.

P16/V1481/HH and P16/V1482/LB – Manor House, Allins Lane. Application for the replacement of existing conservatory with a garden room extension; various internal alterations; conversion works to barn to allow ancillary residential use. PC had no objection to this

## Parish Council

Council meetings are held in Snells Hall at 7:30pm on the 2<sup>nd</sup> Tuesday of each month. An Open Forum, in which parishioners may ask questions, starts at 8pm.

### Clerk to the Council:

Julia Evans, Moorcroft, Greenway, W. Hendred Tel: 833466

### Chairman:

Dr John Sharp, Inish Fail, Orchard Close Tel: 833367

### Deputy Chairman:

Charles Pappenheim, Willow House, Horn Lane Tel: 835014

### Councillors:

Christian Bedford, Penny Green, Cat St Tel: 07966 661298

David Jones, Holly Hock Cottage, Cat St

Tel: 07782326065

Catherine Shortis, Oak Barn, Old Rd

Tel: 820284

Selby Stocks, Portway, Reading Rd

Tel: 821740

Roger Turnbull, Monks Court, Newbury Rd

Tel: 833797

Stephen Webb, Chapel House,

Chapel Square Tel: 833395

## Council Working Groups

**Allotments:** C Shortis

**AONB:** J Sharp

**Bulletin:** J Sharp, C Pappenheim

**Courtesy lights:** C Bedford, C Pappenheim

**Finance:** J Sharp, C Pappenheim, S Webb

### Lengthman

**Supervision:** C Pappenheim

**Playgrounds:** C Bedford, R Turnbull

C Shortis

**Rights of way:** C & A Pappenheim

**Sports Club:** D Jones, S Stocks

## Planning Matters cont.

application but felt that a flat roof on the new conservatory would detract from the front view of the house. The PC welcomed the restoration of the barn but would like to see a covenant in place, guaranteeing that this building does not become a separate dwelling in future. Awaiting a decision from the Vale. P16/V1823/HH - Chapel Meadow, Ford Lane. Application for garage conversion and side extension for garage with room over. PC objected to this application on the grounds that the proposal brings the property right up to the boundary with The Furlong footpath. The design and access statement with the planning application for the house itself (in 2013) included the following text in mitigation of the siting of the house: "The house is sited 5 metres from the site boundary as before and any impact on Pemberley will be lessened as the parking area has been relocated in front of the garage." It is clear that the current application seeks to do away with this mitigation. Awaiting a decision from the Vale.

## Information

### HENDRED STORES & POST OFFICE

#### Opening Hours:

Monday to Friday:

6am - 6pm

Saturday: 6am - 4pm

Sunday: 6am - 12 noon

### POST COLLECTIONS

Weekdays

7:00am & 4:15pm

Saturday

7:00am (Hendred Stores)

### REFUSE COLLECTION

Weekly on Tuesday:

Food Waste

(small green bin)

Alternate Tuesdays:

Non-Recyclables (grey bin)

Alternate Tuesdays:

Recycling (green bin) and

Garden Waste (brown bin)

See

[www.whitehorsedc.gov.uk](http://www.whitehorsedc.gov.uk) for details.

### POLICE Thames Valley

Tel: 101

PCSO Denise Clements,

Badge C9845

### DISTRICT COUNCILLOR

Mike Murray

michael.murray@

whitehorsedc.gov.uk

7 The Causeway

Steventon

Abingdon OX13 6SE

### COUNTY COUNCILLOR

Stewart Lilly

Stewart.lilly@

oxfordshire.gov.uk

### MEMBER OF PARLIAMENT

Ed Vaizey

vaizeye@parliament.uk

House of Commons,

London, SW1A 0AA

## Council Representatives on Other Bodies

**Harwell Liaison:** John Sharp, Stephen Webb  
**Howard Spicer** Ann Taylor,  
**Fund:** Diana Wheeler, Barbara Smith  
**NAG Police:** Janet Shelley

Full details of planning applications can be found at [www.whitehorsedc.gov.uk](http://www.whitehorsedc.gov.uk)

## September to December 2016

### September

- 10<sup>th</sup> Church Ride and Stride  
 13<sup>th</sup> DGA Barge Trip  
 13<sup>th</sup> WI Rounders match v. Wantage WI  
 25<sup>th</sup> St Mary's Harvest Festival

### October

- 2<sup>nd</sup> St Augustine's Harvest Festival and lunch  
 7<sup>th</sup> EHHT Quiz Night at The Wheatsheaf  
 10<sup>th</sup> DGA Bridge Drive  
 21<sup>st</sup> St Augustine's Bingo Evening  
 23<sup>rd</sup> Feast of Local Food

### November

- 1<sup>st</sup> WI Walk round Wallingford  
 9<sup>th</sup> Save the Children Coffee Morning  
 13<sup>th</sup> Act of Remembrance 11am

### December

- 3<sup>rd</sup> Snells Hall Christmas Bazaar  
 9<sup>th</sup>/10<sup>th</sup> Springline Productions Winter Show  
 16<sup>th</sup> St Augustine's Nine Lessons and Carols

### What's On?

To receive the *What's On in The Hendreds* email each week, send an email to [events@hendred.org](mailto:events@hendred.org)  
 Printed copies of the What's On messages are available free from Hendred Stores.

## Regular Events

- Monday** **Scouts** 7–9pm, Snells Hall (Richard Tingley, 07771 545006)
- Tuesday** **Beaver Scouts** 5:25 – 6:25pm, Snells Hall (Vicki 833544)  
**Cub Scouts** 6:30 – 8pm, Snells Hall (Mhairi, 820249)
- Wednesday** **Walking Group** 9:30am, meet at Snells Hall (Susie Turnbull, 833797)  
**Hendred Ukelele Group** 9:30am The Barn, opposite the War Memorial (Dave Parry 07796 674 147)
- Sunday** **Champs Chapel Museum** 2:30 - 4:30pm April to October
- Weekdays** **Pre-school**, at Snells Hall 9 to 12 noon and 12:00 to 3pm Mon-Fri Susan Heakin, 831555 [www.hendredspreschool.org](http://www.hendredspreschool.org)
- Monthly**  
**Snells Hall Committee Meeting** 7:45pm, Snells Hall Gallery, 1st Tuesday  
**Parish Council Meeting** 7:30pm, Snells Hall, 2nd Tuesday  
**Coffee Morning** 10:30am, St Augustines, Last Wednesday, (except August and December)  
**Downs Golden Age** Snells Hall, 1st Thursday (see page 5)  
**Women's Institute** 7:30pm, either Snells Hall or West Hendred Hall, 3rd Thursday (see page 5)

## Church Services

### Parish Church of St Augustine of Canterbury

Rector: Rev. Elizabeth Birch  
 Tel: 833235

Usually the Sunday service is at 10:30am, but please check the noticeboard at the church door, see What's On in The Hendreds or go to [www.wantagedownsbenefice.com](http://www.wantagedownsbenefice.com)

### Catholic Parish of St Mary

Priest-in-Charge:  
 The Rev'd  
 Mgr Andrew Burnham  
 Tel: 01235 835038 or 07976437979  
 Email: [aburnham@portsmouthdiocese.org.uk](mailto:aburnham@portsmouthdiocese.org.uk) or [Hendredandilsley@portsmouthdiocese.org.uk](mailto:Hendredandilsley@portsmouthdiocese.org.uk)

### Sunday Mass

9.30am St Mary's, East Hendred

### From the Editor

Many thanks to all contributors. The deadline for the Winter issue is 12<sup>th</sup> November. Please submit all contributions and diary listings to me, preferably electronically.

Angela Pawlyn

## Useful Contacts

**HENDRED ESTATE** 821543

**HENDRED STORES** 833123

**PUBS** The Eyston Arms 833320  
 The Plough 833213  
 The Wheatsheaf 833229

**SCHOOLS** Hendreds School 833379  
 St Amands School 833342  
 Hendreds Pre-school 831555

**SPORTS** Cricket (Ivan Mulford) 820316  
 Football (Steve Mulford) 818027  
 Tennis (Katie Denne) 821452  
 Bowls (Bill Greenway) 534249

**SNELLS HALL** Wardens / Bookings 833561  
 Payphone 831555

**DOCTORS** Church Street Practice Mably Way 770245  
 Newbury Street Practice Mably Way 763451

**HOSPITALS** Churchill 01865 741841  
 John Radcliffe 01865 741166  
 Nuffield Orthopedic 01865 741155  
 Wantage Community 01235 205801

**Electricity Mains Problems** 0845 7708090

**Gas Leaks** 0800 111999

**Water Mains Problems** 0845 9200800

**Thames Valley Police** (non - emergency) 101

**Rail Enquiries** 0845 7484950

**Buses (Thames Travel)** 01491 837988

**Vale of White Horse District Council** 520202

### WANTAGE

**The Beacon (Civic Hall)** 763456

**Library** 762291

**Recreation Centre** 766201

**The Independent Advice Centre** 765348

**Tourist Information** 760176

**Vale & Downland Museum** 771447

For website and email address details, see

[www.hendred.org](http://www.hendred.org)

### EDITOR

Angela Pawlyn  
[bulletin@hendred.org](mailto:bulletin@hendred.org)

### PRODUCTION AND EDITING

John Sharp  
 Charles Pappenheim

### WEBMASTER

Charles Pappenheim  
[webmaster@hendred.org](mailto:webmaster@hendred.org)

### ADVERTISING

Charles Pappenheim  
 835014

The *Bulletin* is published by East Hendred Parish Council. Opinions expressed are not necessarily those of the Council.

All telephone numbers are local (01235) unless otherwise stated.

**You can view the *Bulletin* online at**

[www.hendred.org/news](http://www.hendred.org/news)